



NUNAVUT EMERGENCY MANAGEMENT

Annual Report

2020-2021





TABLE OF CONTENTS

| | |
|--|-----------|
| Introduction | 3 |
| COVID-19 Response | 5 |
| Training | 6 |
| Search and Rescue | 6 |
| Community Emergency Preparedness | 8 |
| Departmental Business Continuity Planning | 9 |
| Program Supports | 10 |
| Equipment | 10 |
| GPS and InReach kits | 11 |
| Preparedness Posters | 12 |
| NEM Organizational Structure | 13 |
| 2020-21 Search and Rescue Summary | 14 |
| Community Emergency Response Plans | 16 |



Introduction

The Nunavut Emergency Management (NEM) division oversees the provision of search and rescue operations and emergency preparedness. The division is responsible for:

- The development of emergency preparedness plans and providing assistance to Nunavut communities in creating their own plans; and
- Enhancing community-based ground search and rescue (GSAR) capability and preparedness across Nunavut by providing search and rescue (SAR) training to Search and Rescue Organizations (SARO) and assisting with certain SARO Equipment and communication systems.

NEM also provides advice, guidance, and ensures compliance with mandatory territorial and federal legislation and policy regarding emergency management. Some of the ongoing initiatives and priorities for NEM are to:

- Develop business continuity plans in collaboration with GN departments to map out their emergency preparedness;
- Enhance community-based searches by improving the SAR Program through training and assistance with equipment and communication systems for search and rescue organizations;
- Improve programs and services to community stakeholders by developing and implementing northern based training to meet national standards of search and rescue. NEM strives to deliver ongoing training to meet the unique needs of each community; and
- Ensure NEM's organizational structure aligns with operational needs.

This report provides an overview of the key operations undertaken by NEM through fiscal year 2020-2021. A significant portion of NEM resources were dedicated to dealing with the GN's COVID-19 response. Despite these challenges, NEM still provided general training and search and rescue operations while adhering to Nunavut's public health regulations throughout the pandemic.





Search and Rescue Authority

In Nunavut, ground search and rescue is covered under the Territorial Community Police Service Agreement. On-the-land medivacs are the responsibility of the Department of Health. NEM's role is to assist in locating air and ground support as needed. This is covered under a Memorandum of Understanding between the Departments of Community and Government Services and Health.



Canada's SAR Response Authorities

| Type of SAR incident | Lead Authority |
|--|--|
| ▼ Aircraft incidents Anywhere in Canada | Canadian Armed Forces |
| ▼ Maritime incidents On the oceans Coastal waters and the Great Lakes/St. Lawrence River system | Canadian Coast Guard |
| ▼ Ground and Inland Water (GSAR) On land (e.g. hikers, hunters, lost persons) On inland waterways (e.g. pleasure boaters, anglers, paddlers) | Provincial/territorial governments; usually delegated to the police force of jurisdiction. |
| ▼ SAR in National Parks, National Historic Sites and Marine Conservation Areas On land (e.g. hikers, mountain bikers) On inland waterways (anglers, paddlers) | Parks Canada Agency |

Source: *Quadrennial Search and Rescue Review, Government of Canada, 2013*

COVID-19 Response

Throughout 2020-21, Nunavut communities faced many challenges due to the COVID-19 pandemic. NEM participated in the planning and logistics for the Government of Nunavut's (GN) overall response to COVID-19.

Personal Protective Equipment (PPE) played a significant role in the GN's strategy towards preventing the spread of COVID-19. NEM, in collaboration with the Department of Health created and organized a storage area for PPE and other critical items received from the federal government. As a result of this, PPE and other materials/equipment including rapid tests and rapid responses kits were then sent onwards to community health centres across Nunavut. NEM continues to support this operation as COVID-19 response needs continue into 2022.

NEM also provided ongoing support in response to community outbreaks. Emergency response plans were developed to address the following COVID-19 situations and needs:

- Flights with COVID-19 positive community members;
- Outbreaks in correctional facilities, shelters, and isolation hubs; and
- Vaccine distribution logistics.

It was critical throughout 2020-21 that GN's front line programs and services remain operational despite COVID-19 outbreaks and public health regulations. In order to do so, NEM provided guidance and support to departments on how to prioritize operations and identify critical staff required to maintain departmental functions. This was achieved through the development of departmental COVID-19 business continuity plans.



Training

Search and Rescue

A key function of NEM is to ensure communities are provided with the necessary training and resources to handle emergency situations. In 2020-21, NEM continued its second year of delivering a Nunavut specific search and rescue training program targeting issues faced by Nunavut communities. This program was developed in collaboration with the MTO and Arctic Response.

Key components of the training program included:

- Training on the GPS Map 276cx and Garmin In-Reach Explorer units. These units are distributed to search and rescue groups to assist with real time 2-way communication via text with their search coordinator and NEM; and
- The installation of new SPOT devices in communities and teaching skills on mapping and comprehensive GPS usage.

This training resulted in:

- NEM increasing the proficiency and safety of SAR operations and volunteer's skills; and
- The integration of new technology to improve communication speed (the previous use of satellite phones often delayed community by hours).

The success of Nunavut's SAR training programs (equipment for both land and local searches) have not gone unnoticed by other jurisdictions. Nunavik, for example, has begun to tailor its programs and equipment based on NEM's best practices and successes.

Due to the high turnover of search and rescue coordinators and searchers, it is essential that NEM increases the frequency of training to ensure that personnel are up to date with equipment

and technology when tasked with a search. NEM has committed to increasing training from four communities per year to at least 12. As a result, communities throughout Nunavut will receive bi-annual training- a significant improvement from every four years under the previous program.

In 2020-21, COVID-19 was a factor that hindered the delivery of training across Nunavut. Training was originally scheduled to be delivered to 12 communities, out of those, only five communities were able to receive the scheduled training

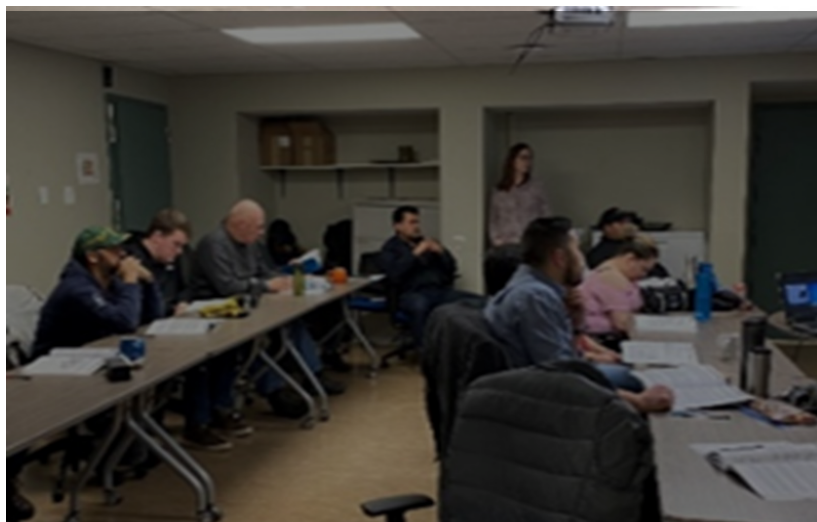
2020-2021 SAR training was completed for:





Training was also hindered by Nunavut's geographic and seasonal reality. A large portion of communities in Nunavut do not do on land ATV searches and most of the training revolves around winter-based snowmobile searches.

In order to improve training capacity within NEM, the division is assessing the feasibility of developing online training sessions for communities to access.



Community Emergency Preparedness

NEM, in collaboration with MTO has delivered Community Emergency Response plan training to communities across Nunavut.

The Community Emergency Response Plan (CERP) training is a 3-day course that provides municipalities with an all-hazards approach framework to assist in planning and organizing during an emergency. The training provides communities with the tools and knowledge to respond to any emergency that can potentially arise in a community.

The program helps to identify the community control groups that are made up of key players during an emergency including:

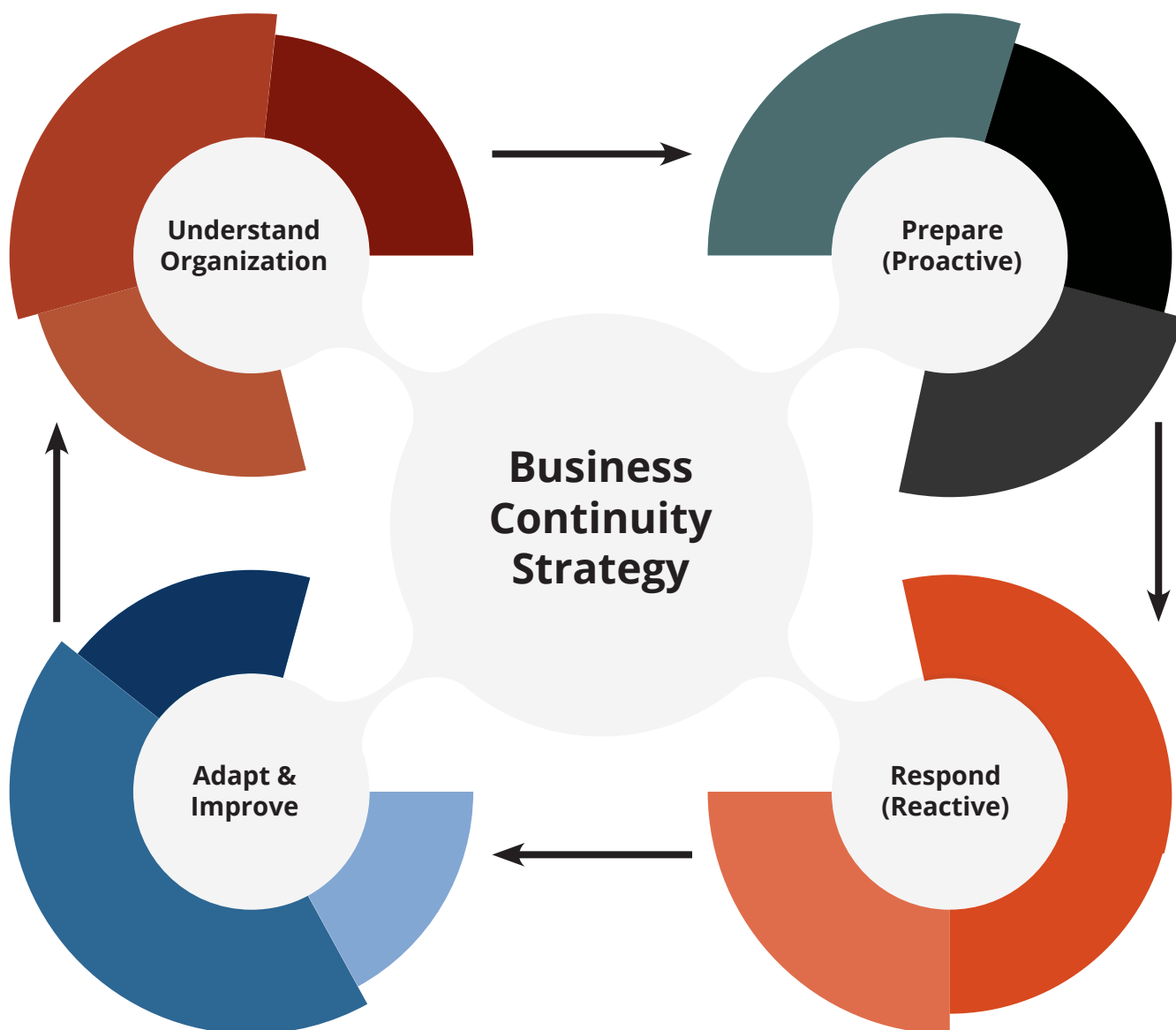
- The Senior Administrative Officer within each hamlet;
- Local RCMP;
- Health centre staff; and
- Other hamlet staff as required.



Departmental Business Continuity Planning

NEM has also taken a leading role in the GN's business continuity planning. This process involves developing a plan that outlines how specific divisions/ departments will continue to function during or after an emergency, disaster, or event. It includes planning how key services or products can be continued and/or recovered.

NEM assists departments with developing a plan for various emergency scenarios. Business continuity planning differs from an all-hazards approach plan in that it requires same framework to deal with every possible incident. Throughout 2020-21, NEM supported every department for the completion of their COVID-19 plans.





Program Supports

Equipment

Go Bags

NEM has developed a “go bag” that contains survival items to assist a searcher should they find themselves stranded on the land.

This bag was developed in response to searchers identifying this as a key need. These bags are the property of each search and rescue group and can be signed out by a searcher. A total of 24 bags were shipped out to the 12 communities in 2020-21. Each community will have a total of 2 bags.

The bag contains:

- Large Duffle Bag
- Waterproof Matches
- Colman Multifuel Stove (Single Burner)
- Colman Fuel Funnel
- Stanley Camp Pot Set
- Petzl Headlamp
- Signal Mirror
- Sleeping Bag
- Blue Tarp
- Survival Blanket
- Machete (Snow Knife)
- Survival Shovel
- Stanley Thermos
- Mittens
- Hat/Toque
- Face Mask

GPS and InReach kits

NEM has provided communities with Garmin GPS map 276cx and inReach units.

These units are to assist searchers in tracking and logging their route. The Garmin GPS is a large unit with a user-friendly screen and buttons that can be easily utilized in the cold.

NEM intend to provide enough units for every search and rescue volunteer identified by each community SAR group. This will be another tool that will assist in safer search and rescue operations. These units are an upgrade from smaller handheld GPS units and satellite phones that were previously provided.



Garmin GPS map 276cx



**Garmin GPS
inReach**



Preparedness Posters

NEM is committed to continuing education around emergency preparedness and safety. In 2020-21, a new poster was developed that provides information on essential items that may be required in case of an emergency. NEM also developed Summer and Winter time self-reliance posters. These posters outline safety items to bring with you on the land or the water. The posters are translated into all official languages and have been distributed across Nunavut.





NEM Organizational Structure

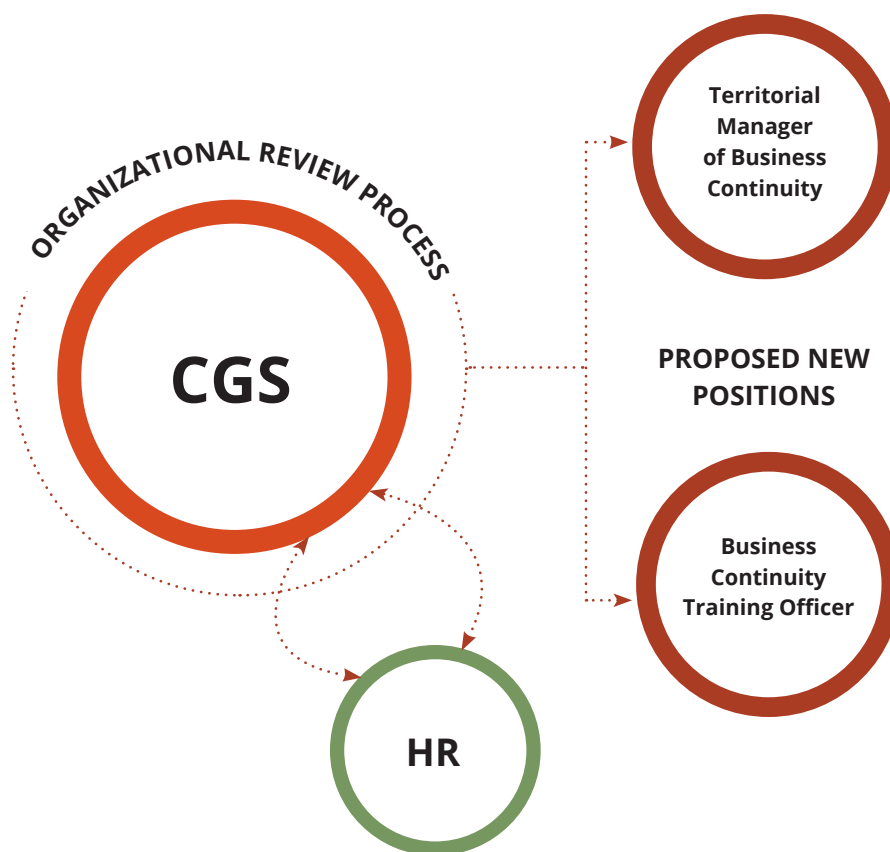
NEM has undertaken an organizational review process to ensure divisional resources meet the ongoing emergency management needs. NEM has identified a greater need for resources to support business continuity plans for GN departments.

The NEM business continuity positions that are being proposed include:

- Territorial Manager of Business Continuity
- Business Continuity Training Officer

NEM will continue working to ensure that human resource needs of the division align with the operational requirements.

NEM continues to strive to bring Nunavut to the national standard of search and rescue and emergency preparedness. Improving operational resources, processes and technology remain key priorities for the division.





2020-21 Search & Rescue Summary

Incidents by Month

| Month | Number of Incidents |
|-----------|---------------------|
| January | 16 |
| February | 18 |
| March | 15 |
| April | 22 |
| May | 16 |
| June | 28 |
| July | 6 |
| August | 18 |
| September | 19 |
| October | 15 |
| November | 9 |
| December | 13 |

Incidents by Region

| Region | Number of Incidents |
|--------------------|---------------------|
| Qikiqtaaluk Region | 82 |
| Kivalliq Region | 76 |
| Kitikmeot | 44 |
| Total | 202 |



Search and Rescue by Community

| Community | Number of Rescues |
|------------------------|-------------------|
| Arctic Bay | 6 |
| Arviat | 15 |
| Baker Lake | 11 |
| Cambridge Bay | 5 |
| Cape Dorset | 2 |
| Chesterfield Inlet | 5 |
| Clyde River | 1 |
| Coral Harbour | 16 |
| Gjoa Haven | 25 |
| Grise Fiord | 0 |
| Sanirajak (Hall Beach) | 29 |
| Igloolik | 15 |
| Iqaluit | 5 |
| Kimmirut | 1 |
| Kugaaruk | 2 |
| Kugluktuk | 2 |
| Manitoba | 0 |
| Pangnirtung | 3 |
| Pond Inlet | 14 |
| Qikiqtarjuaq | 0 |
| Rankin Inlet | 11 |
| Naujaat (Repulse Bay) | 10 |
| Resolute Bay | 1 |
| Sanikiluaq | 5 |
| Taloyoak | 10 |
| Whale Cove | 8 |
| Ontario | 0 |
| Total | 202 |

Search and Rescue Statistics, tasking codes

| Region | Number of Rescues |
|-------------------------------------|-------------------|
| 600- Unidentified Emergency | 2 |
| 605-Fire Emergency | 0 |
| 610-Aircraft Emergency | 1 |
| 610-Environmental Emergency | 0 |
| 615-Power Emergency | 0 |
| 625-Air Search and Rescue | 1 |
| 630-Marine Search & Rescue | 18 |
| 635-Ground Search and Rescue | 126 |
| 640-RCMP Request for Assistance | 11 |
| 645- JRCC Request for assistance | 2 |
| 650-Medivac | 0 |
| 655-Ground SPOT Activations | 35 |
| 660- General request for assistance | 2 |
| 670-Ground Search on Ice | 3 |
| 675-Marine SPOT Activations | 0 |
| 680-Ice SPOT activations | 1 |
| Total | 202 |



Community Emergency Response Plans

Community Emergency Response Plan Training (CERP)

| Location | Training Completed | Training scheduled |
|--------------------|--------------------|---------------------------|
| Baffin | | |
| Arctic Bay | Mar 2021 | - |
| Pond Inlet | Feb 2020 | - |
| Clyde River | Feb 2020 | Mar 2022 |
| Qikiqtarjuaq | Feb 2020 | - |
| Pangnirtung | Feb 2011 | Cancelled due to COVID-19 |
| Iqaluit | Dec 2008 | - |
| Kimmirut | Apr 2010 | Fiscal 2022-2023 |
| Cape Dorset | Mar 2017 | Fiscal 2022-2023 |
| Grise Fiord | Mar 2021 | - |
| Resolute | Mar 2021 | - |
| Sanikiluaq | Dec 2010 | Mar 2022 |
| Igloolik | Mar 2021 | - |
| Sanirajak | Sept 2010 | Mar 2022 |
| Kivalliq | | |
| Arviat | Jan 2020 | Cancelled due to COVID-19 |
| Baker Lake | June 2019 | Feb 2022 |
| Chesterfield Inlet | Oct 2010 | Mar 2022 |
| Coral Harbour | Oct 2010 | Mar 2022 |
| Rankin Inlet | Jan 2020 | Cancelled due to COVID-19 |
| Nauyasat | Mar 2010 | Feb 2022 |
| Whale Cove | Nov 2009 | Fiscal 2022-2023 |

| Location | Training Completed | Training scheduled |
|------------------|--------------------|---------------------------|
| Kitikmeot | | |
| Cambridge Bay | Mar 2022 | - |
| Kugluktuk | Oct 2009 | Cancelled due to COVID-19 |
| Kugaaruk | Mar 2017 | Cancelled due to COVID-19 |
| Gjoa Haven | Mar 2022 | - |
| Taloyoak | Oct 2009 | Cancelled due to COVID-19 |