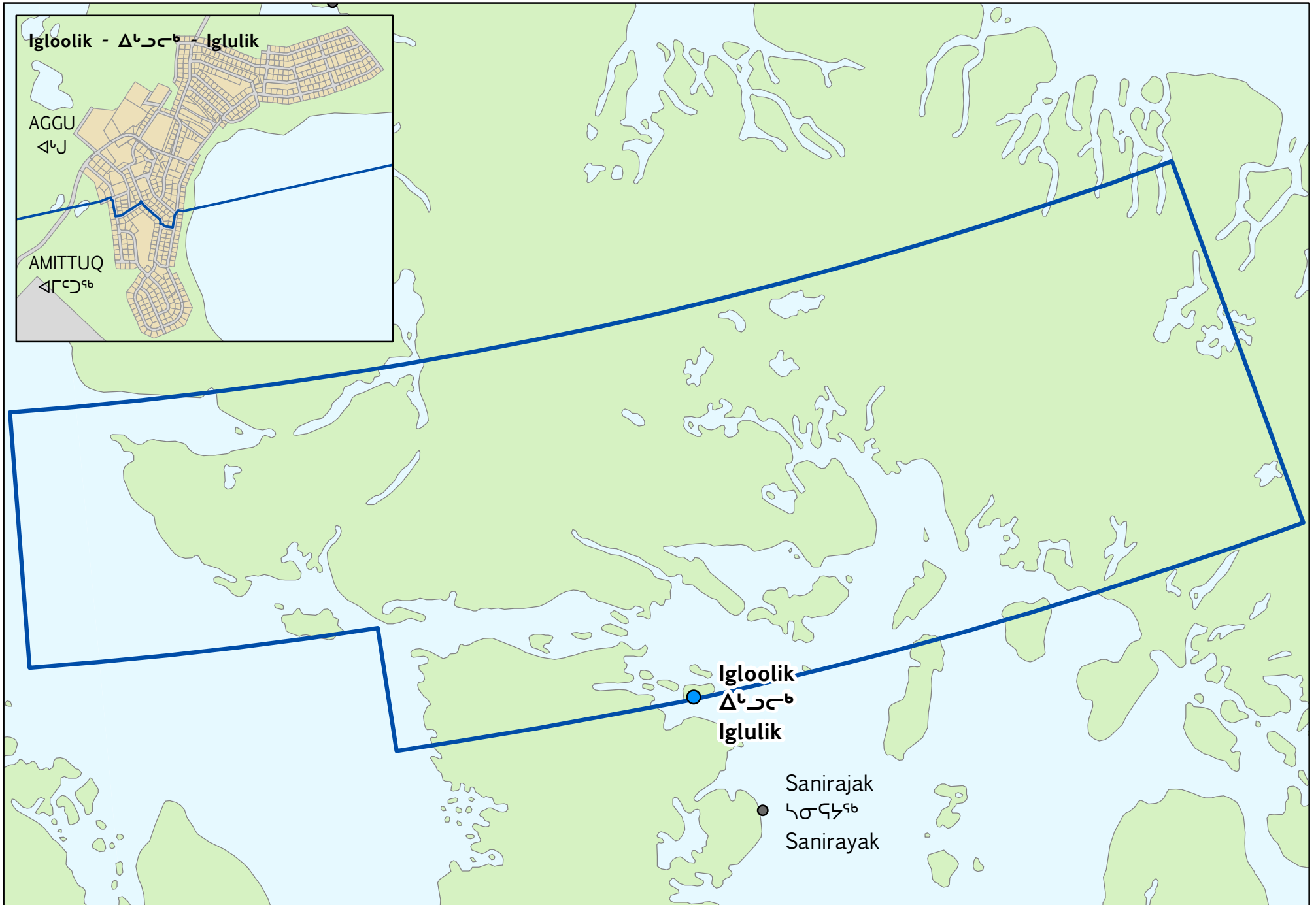
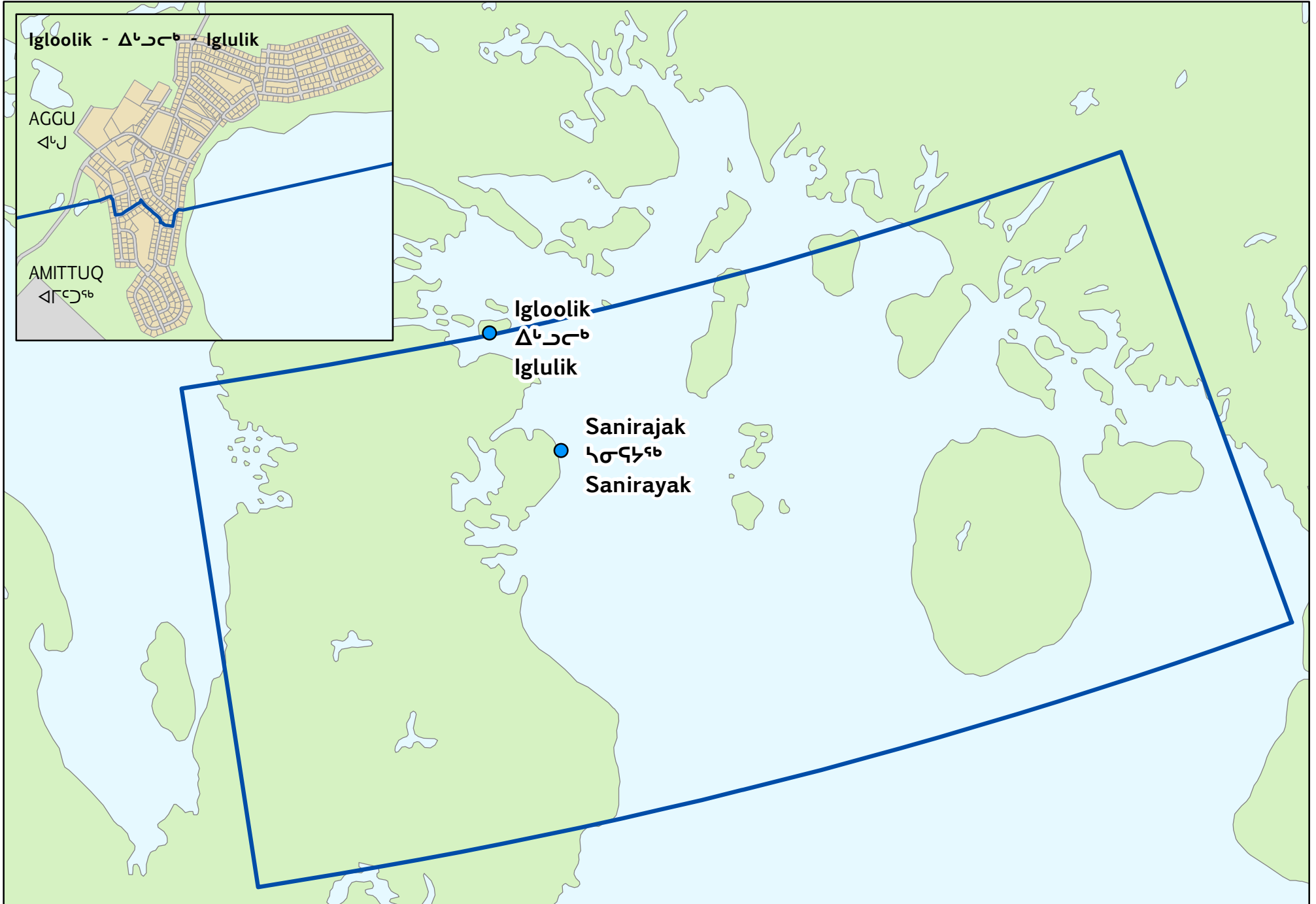


AGGU - ᐱᑭᑦ



AMITTUQ - ᐱᐢᐸᐸᐸᐸ



Igloolik - ᐱᐸᐸᐸᐸ - Iglulik

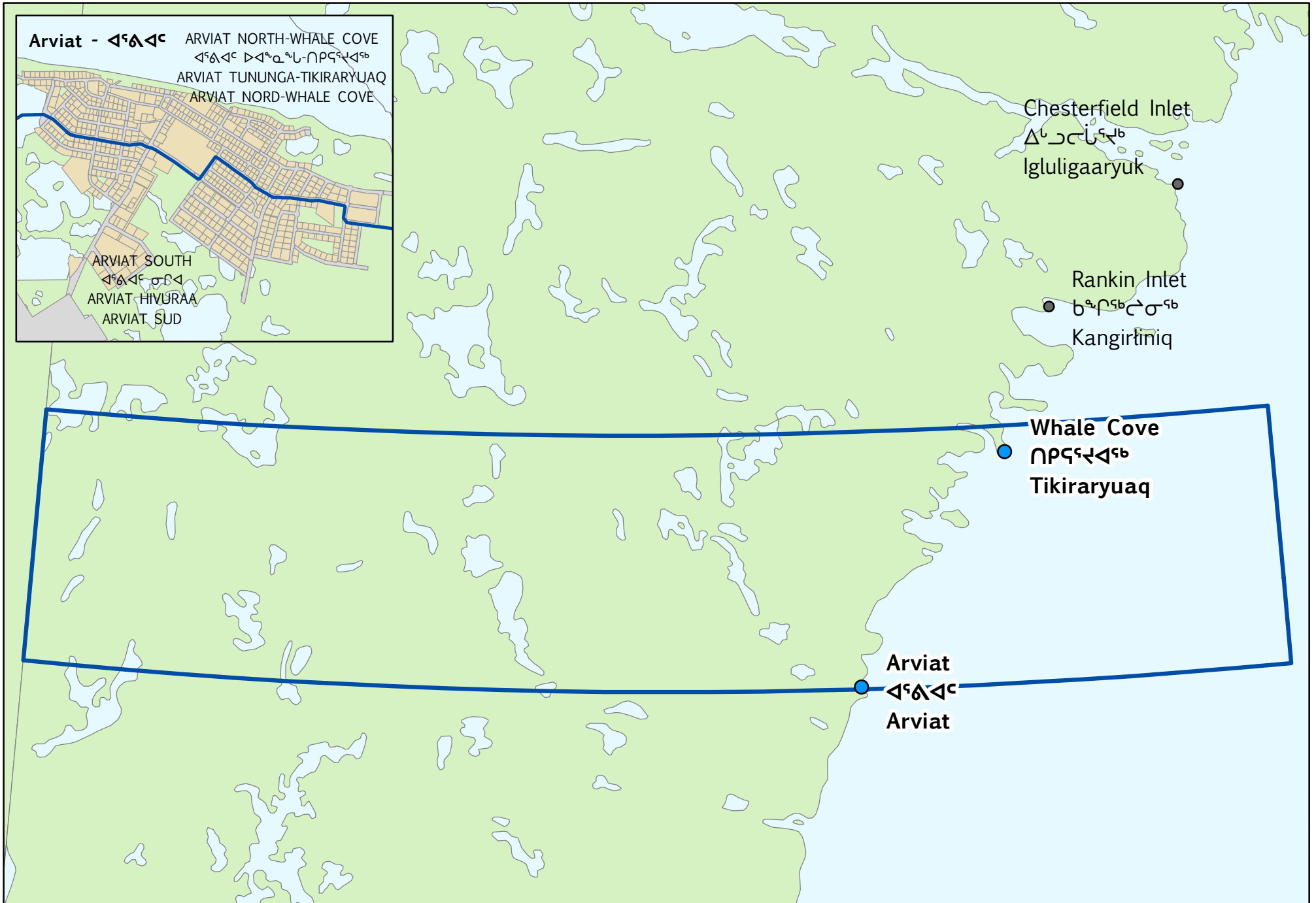
AGGU
ᐱᐸᐸ

AMITTUQ
ᐱᐢᐸᐸᐸᐸ

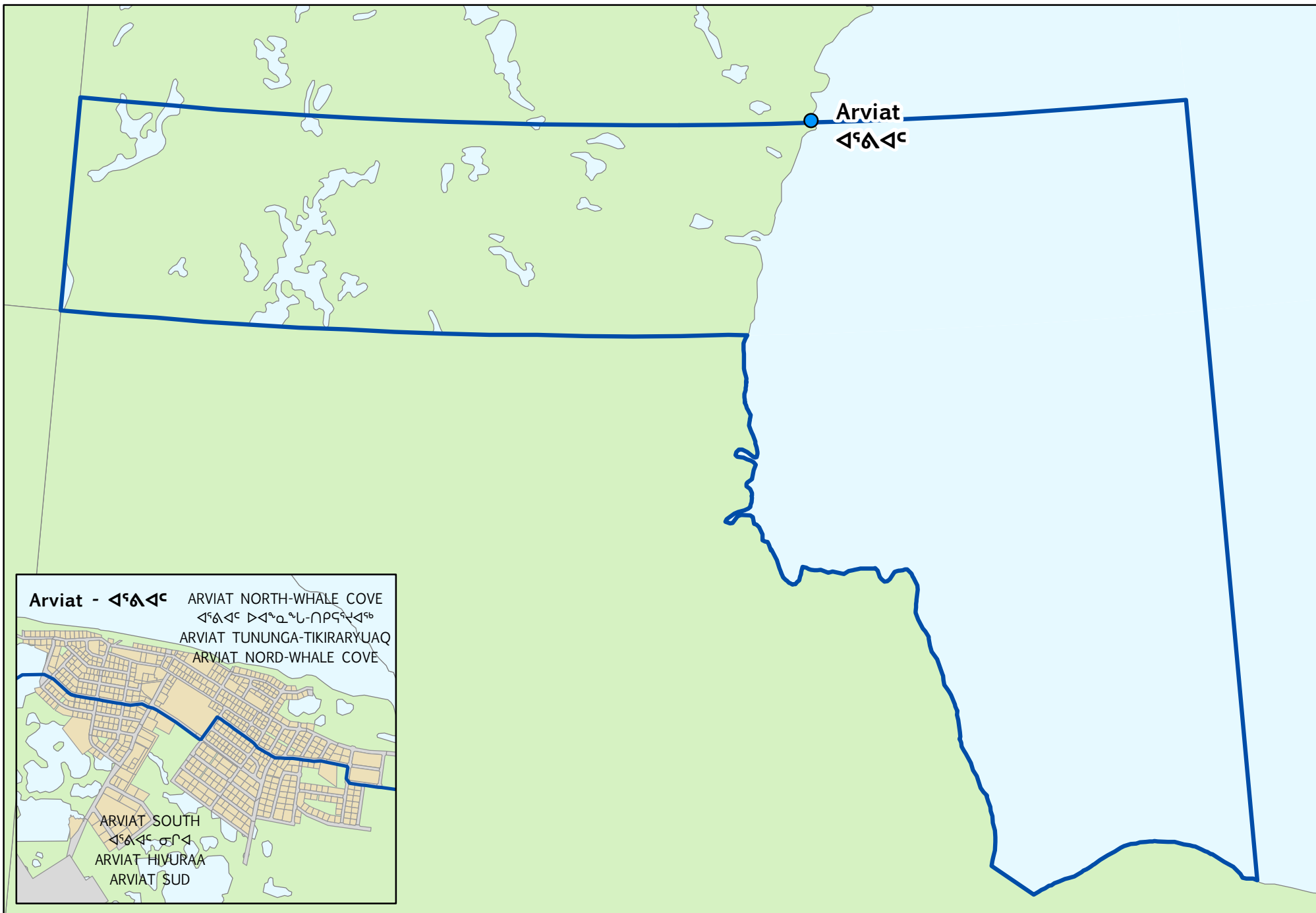
Igloolik
ᐱᐸᐸᐸᐸ
Iglulik

Sanirajak
ᐸᐸᐸᐸᐸᐸ
Sanirajak

ARVIAT NORTH-WHALE COVE - ᐱᕐᕐᕐᕐ ᐅᐱᕐᕐᕐᕐ-ᐱᕐᕐᕐᕐᕐᕐ - ARVIAT TUNUNGA-TIKIRARYUAQ - ARVIAT NORD-WHALE COVE



ARVIAT SOUTH - ᐱᓃᐱᐱᓃ ᓂᓯᐱ - ARVIAT HIVURAA - ARVIAT SUD



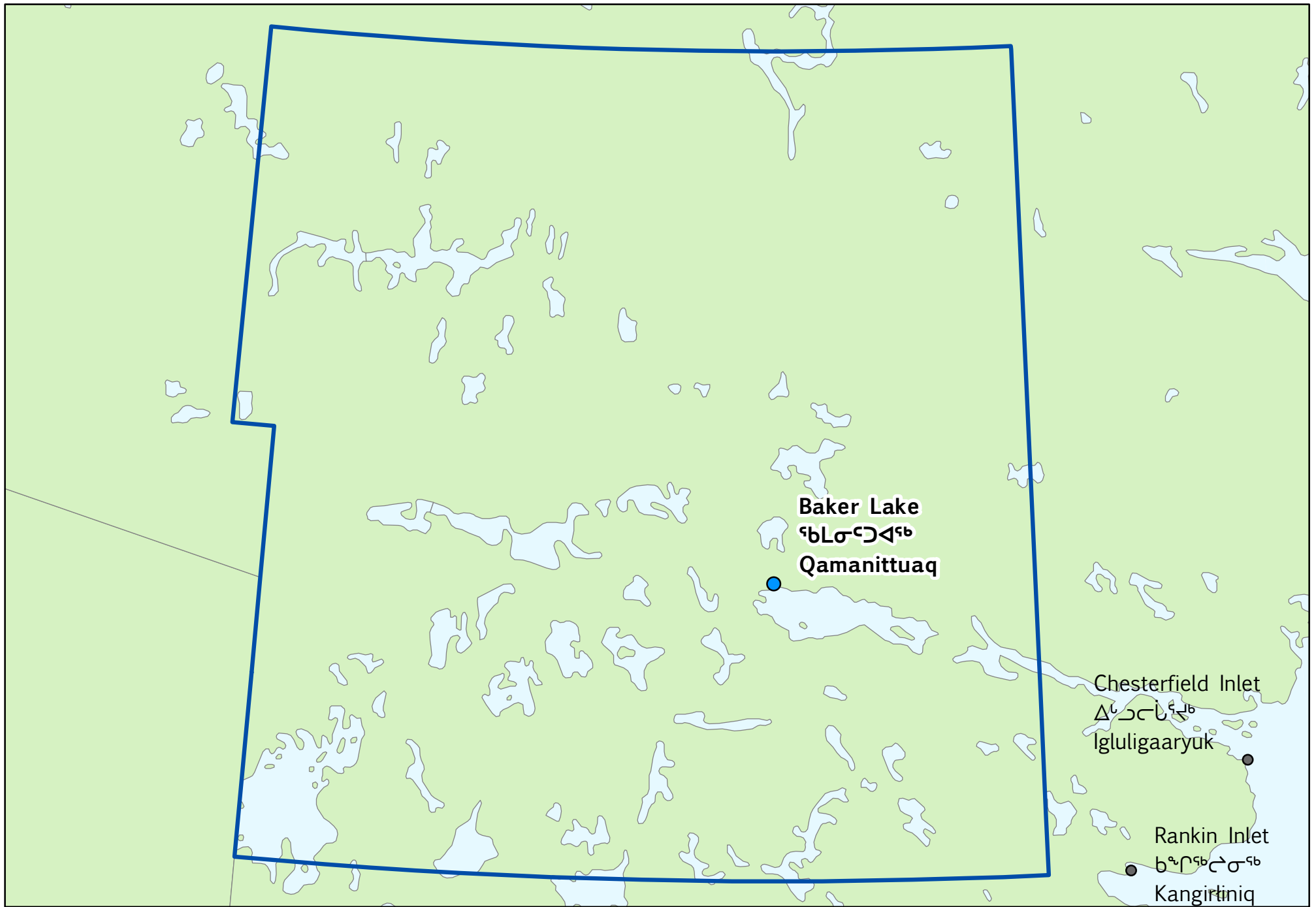
Arviat
ᐱᓃᐱᐱᓃ

Arviat - ᐱᓃᐱᐱᓃ

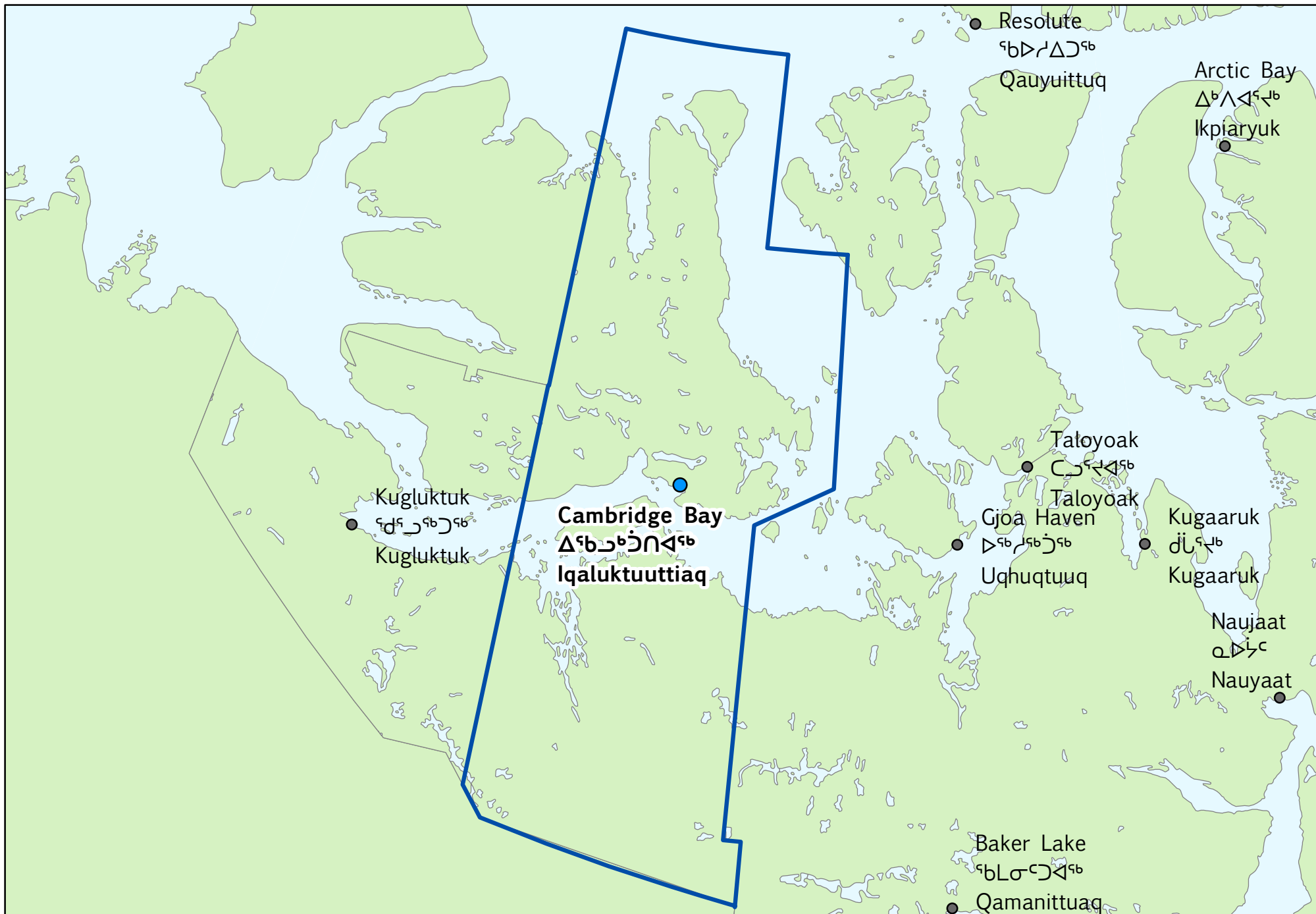
ARVIAT NORTH-WHALE COVE
ᐱᓃᐱᐱᓃ ᐅᐱᓐᐱᓐᓴᓴ-ᓯᓂᓯᓃᐱᐱᓃ
ARVIAT TUNUNGA-TIKIRARYUAQ
ARVIAT NORD-WHALE COVE

ARVIAT SOUTH
ᐱᓃᐱᐱᓃ ᓂᓯᐱ
ARVIAT HIVURAA
ARVIAT SUD

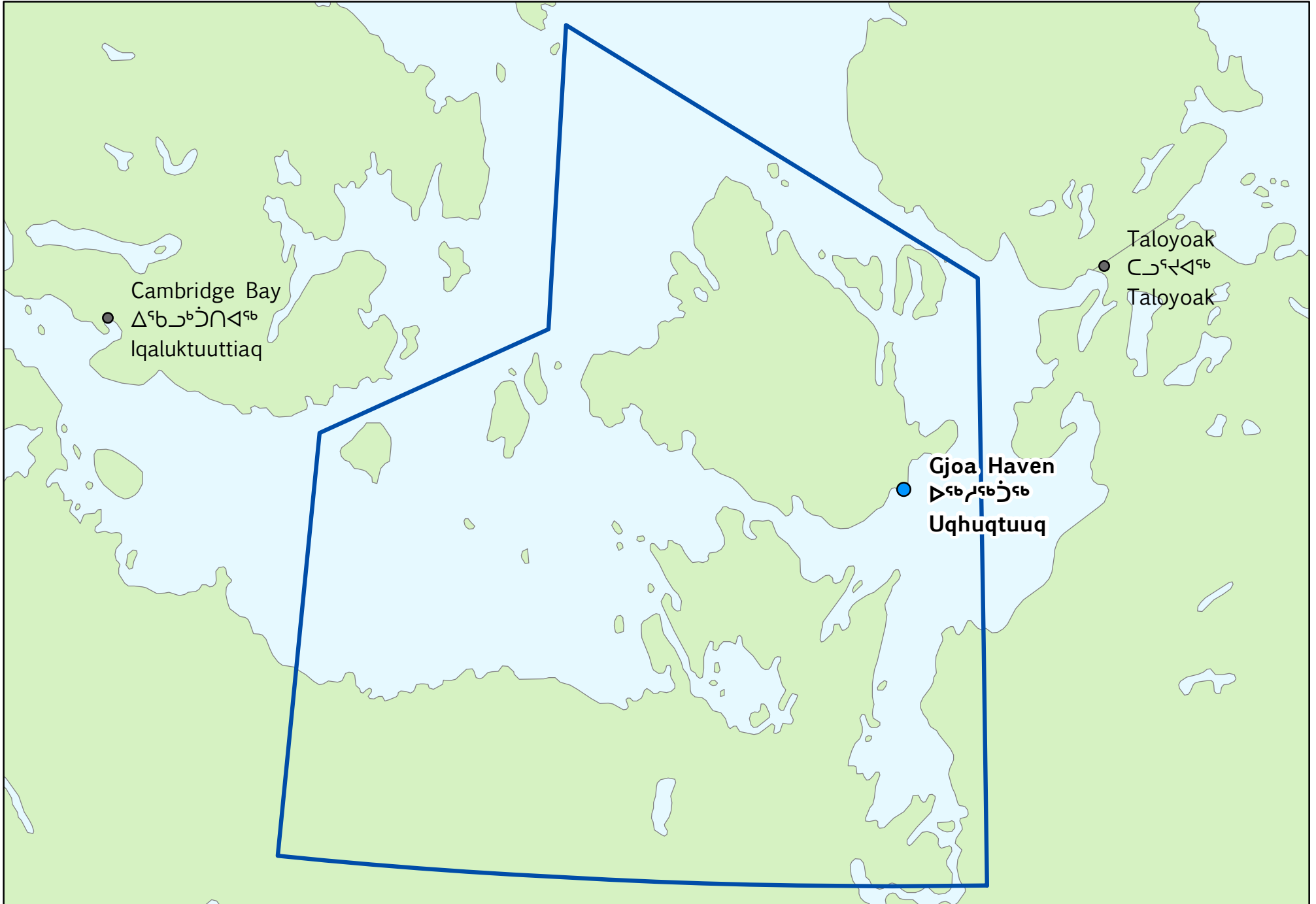
BAKER LAKE - ᖃᓕᓄᓐᓴᓐ - QAMANITTUAQ



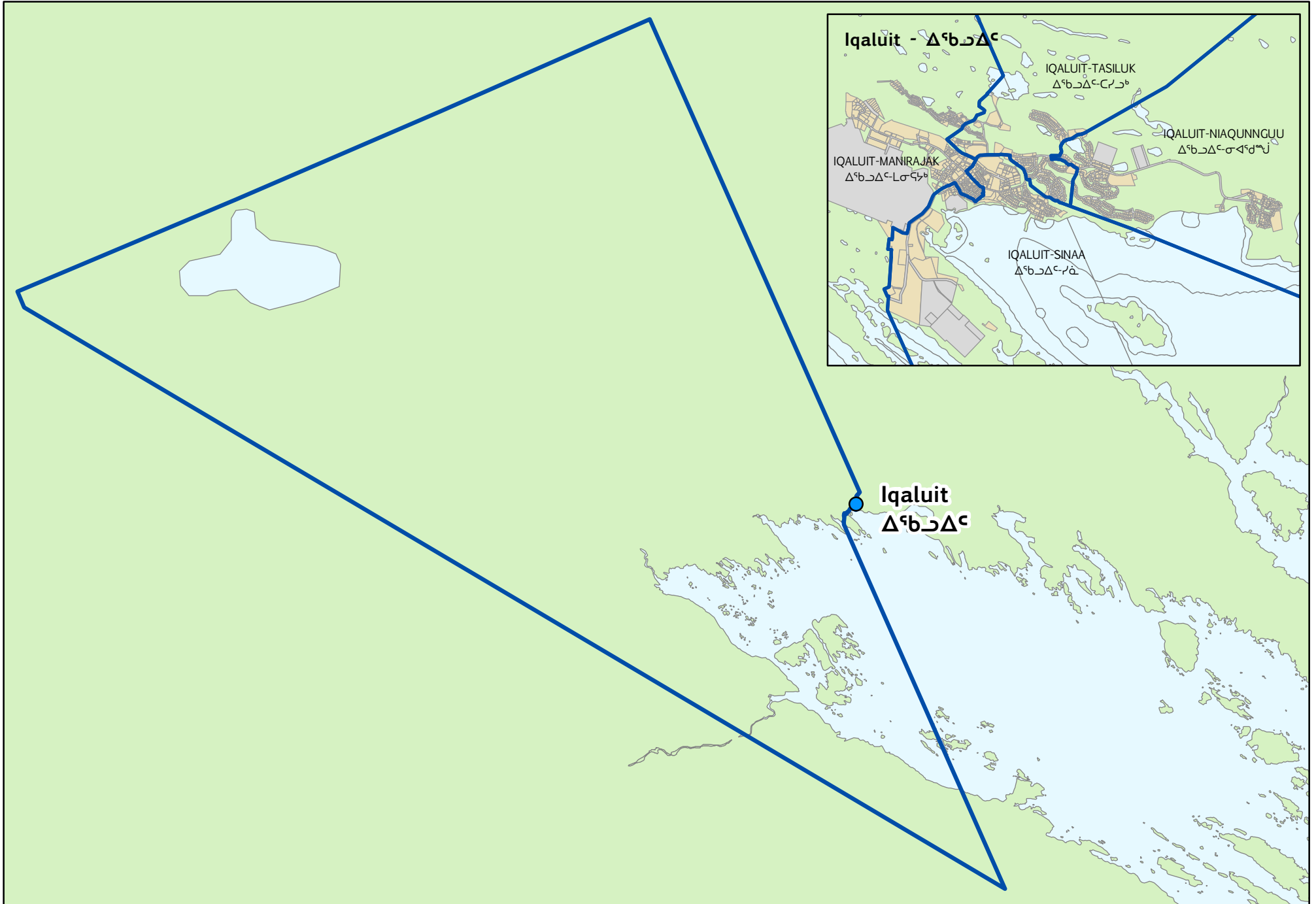
CAMBRIDGE BAY - ᐃᖃᐳᐅᐅᐅᐅᐅᐅᐅᐅ - IQALUKTUUTTIAQ



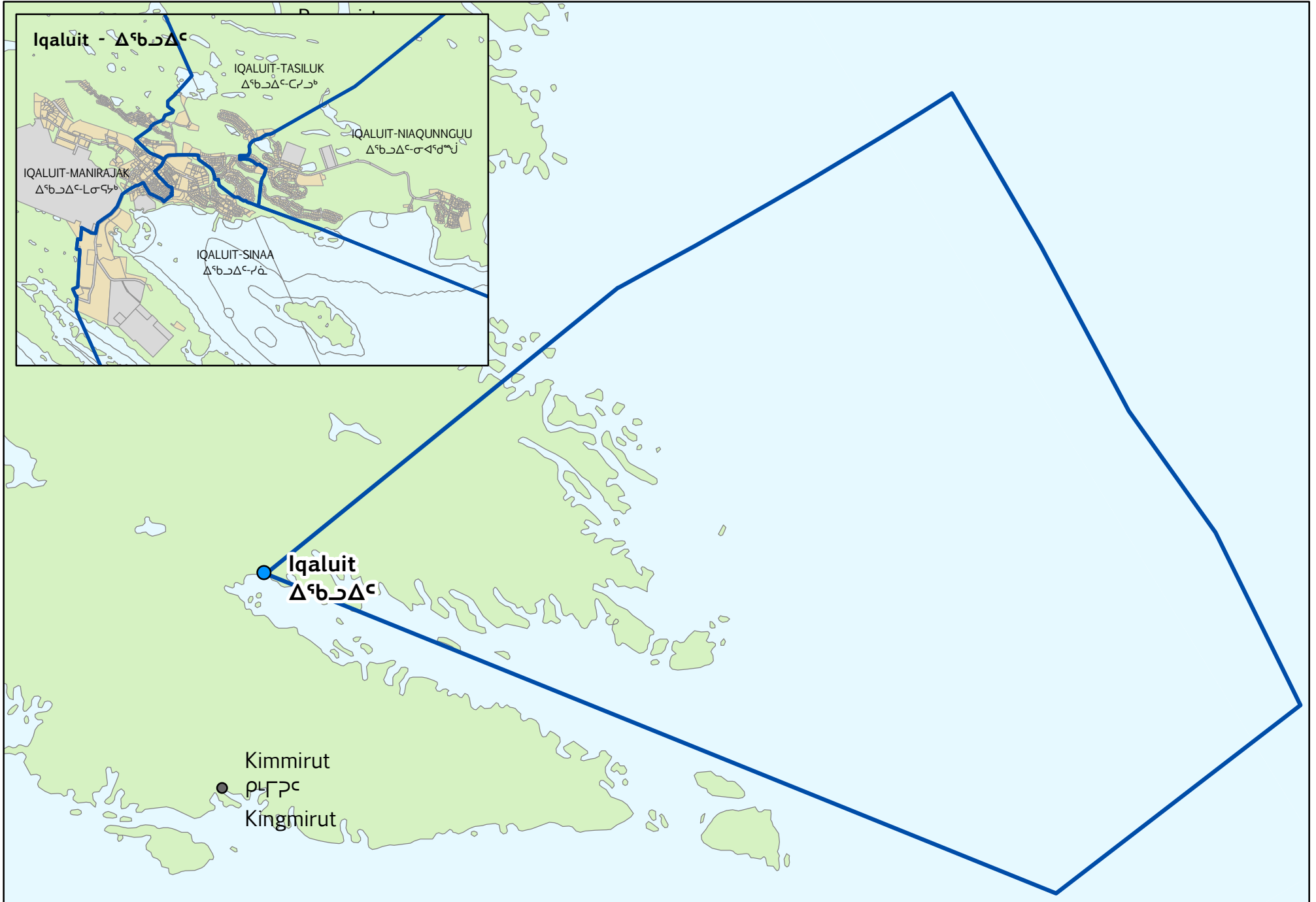
GJOA HAVEN - ᐅᓃᓃᓃᓃᓃᓃᓃ - UQHUQTUUQ



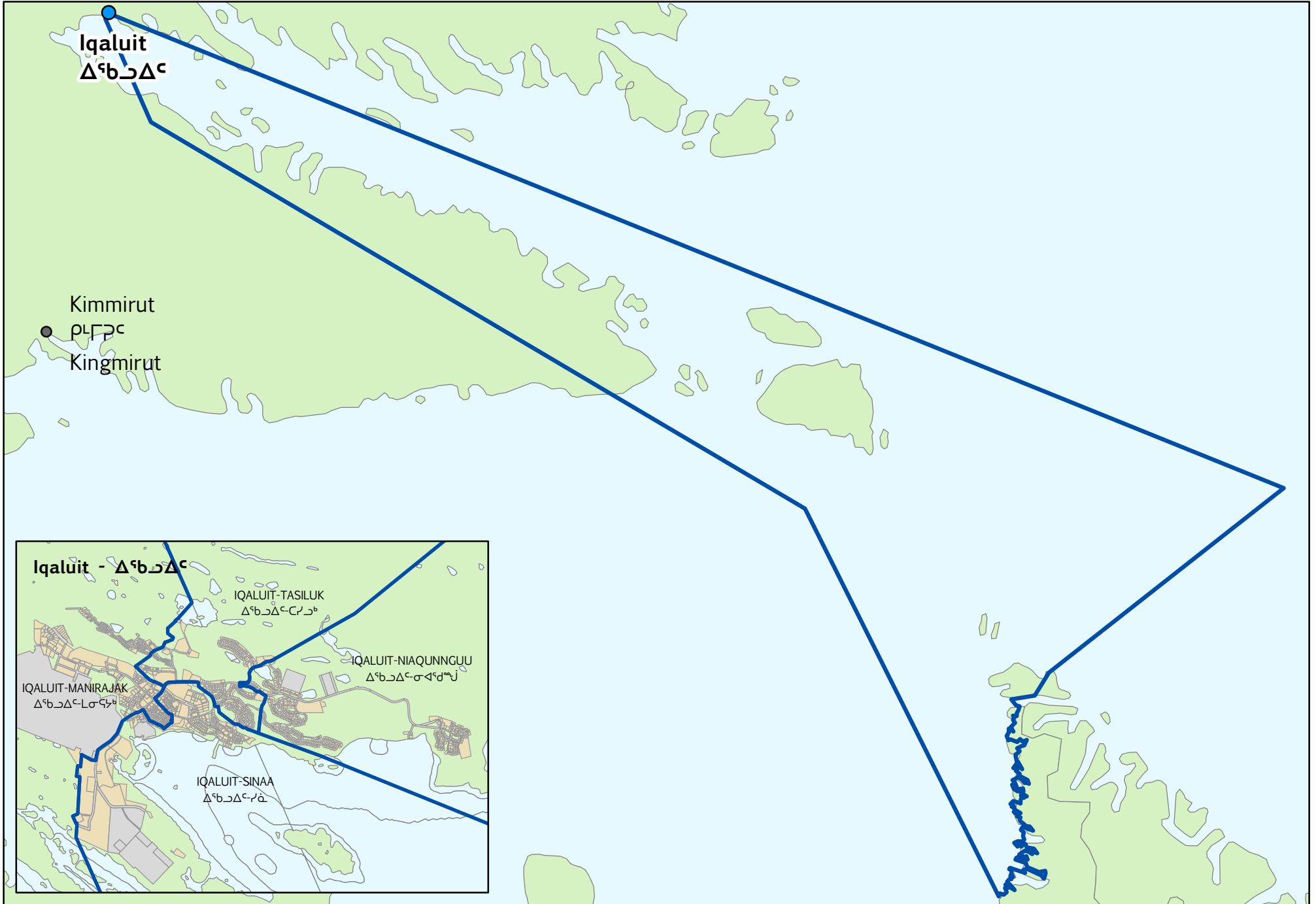
IQALUIT-MANIRAJAK - ᐃᑦᑲᐃᑦ-ᐱᑦᑲᑦ



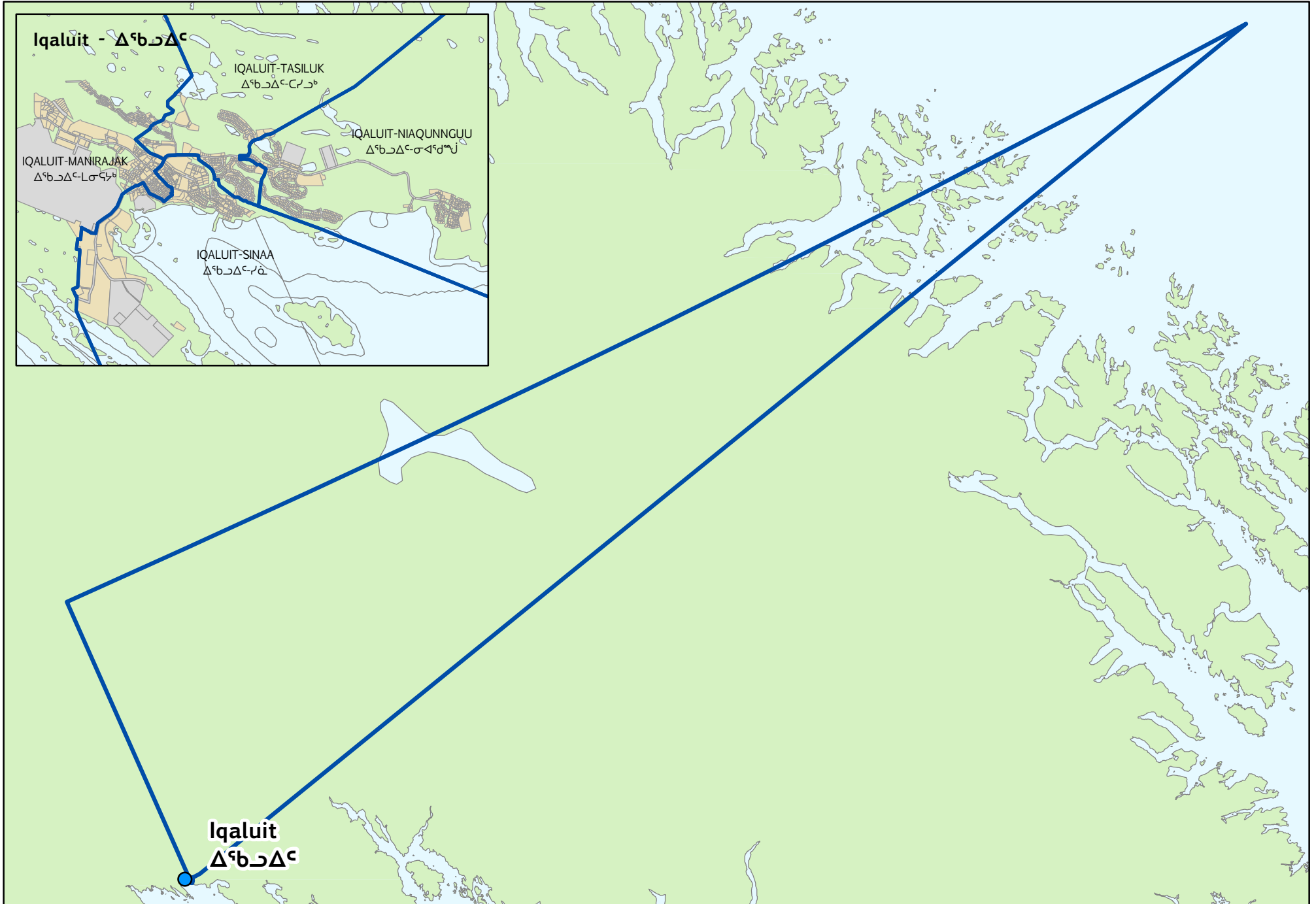
IQALUIT-NIAQUNGUU - ᐃᖅᓃᐃᑦ-ᓂᐸᐸᐃᓃᑦ



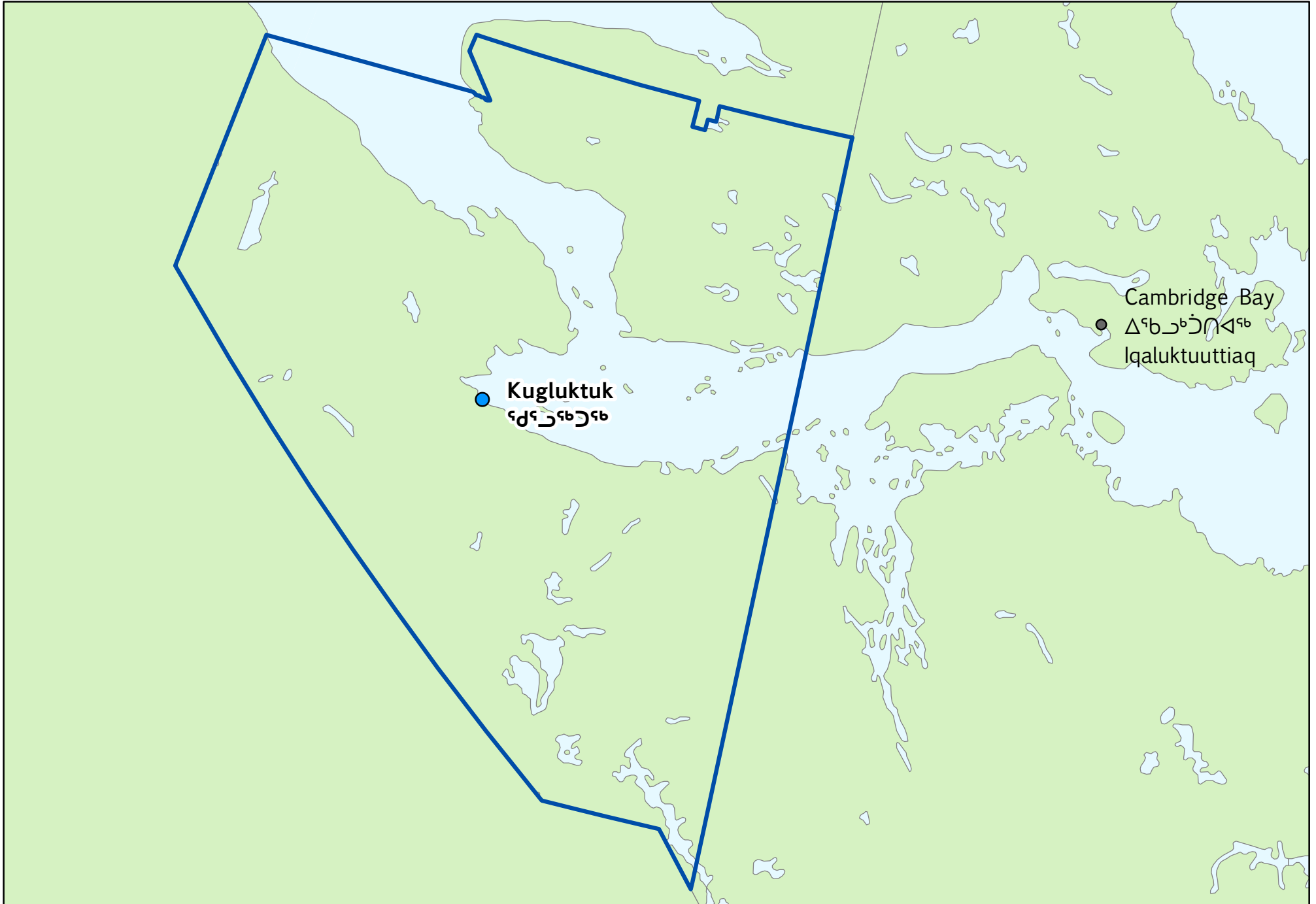
IQALUIT-SINAA - ᐃᑦᑲᐃᑦ-ᑭᐃ



IQUALUIT-TASILUK - ᐃᑦᑲᐃᑦ-ᑕᑦᑲᑦ



KUGLUKTUK - ᖃᖃᖃᖃᖃᖃ



Cambridge Bay

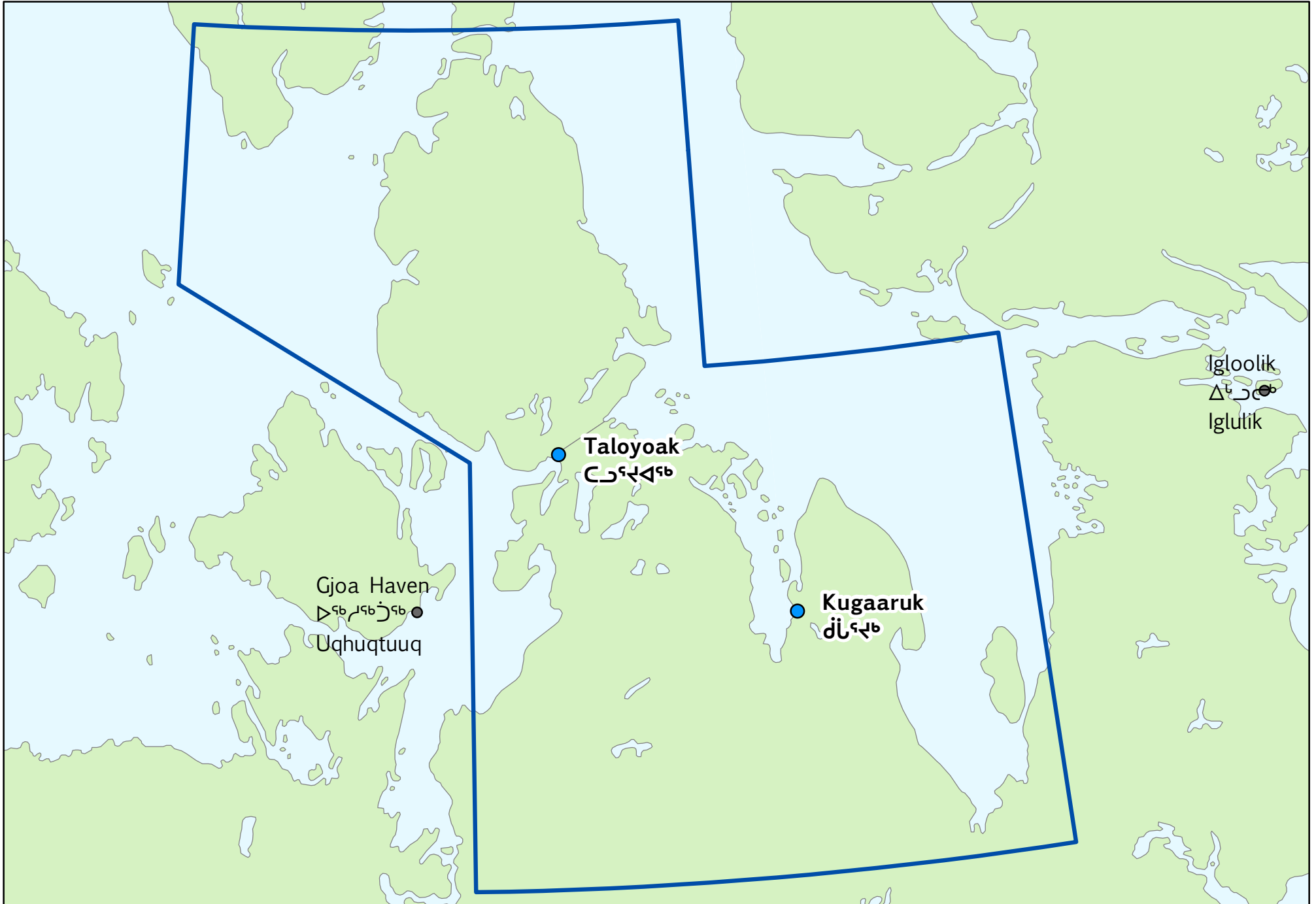
ᖃᖃᖃᖃᖃᖃ

Iqaluktuuttiaq

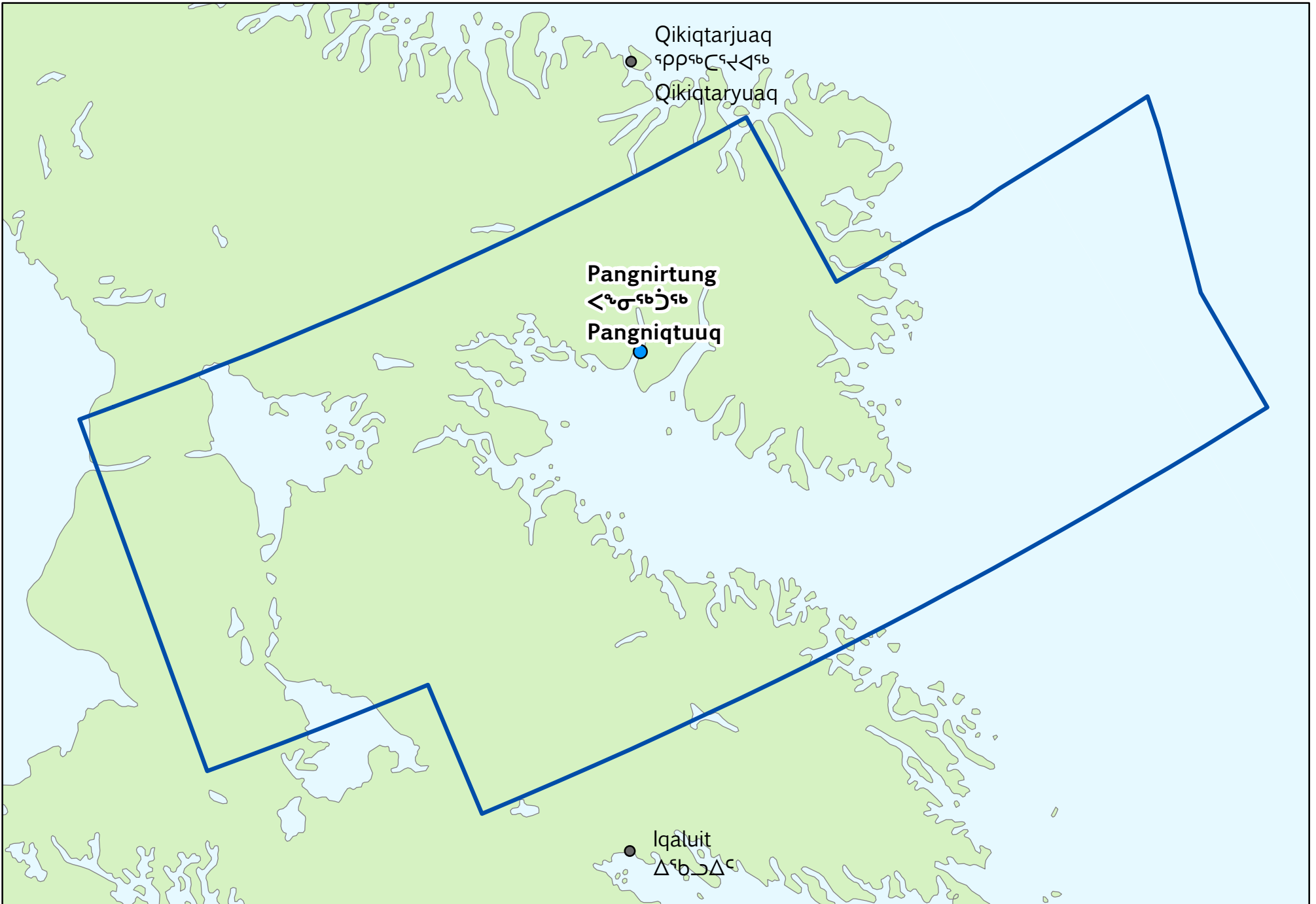
Kugluktuk

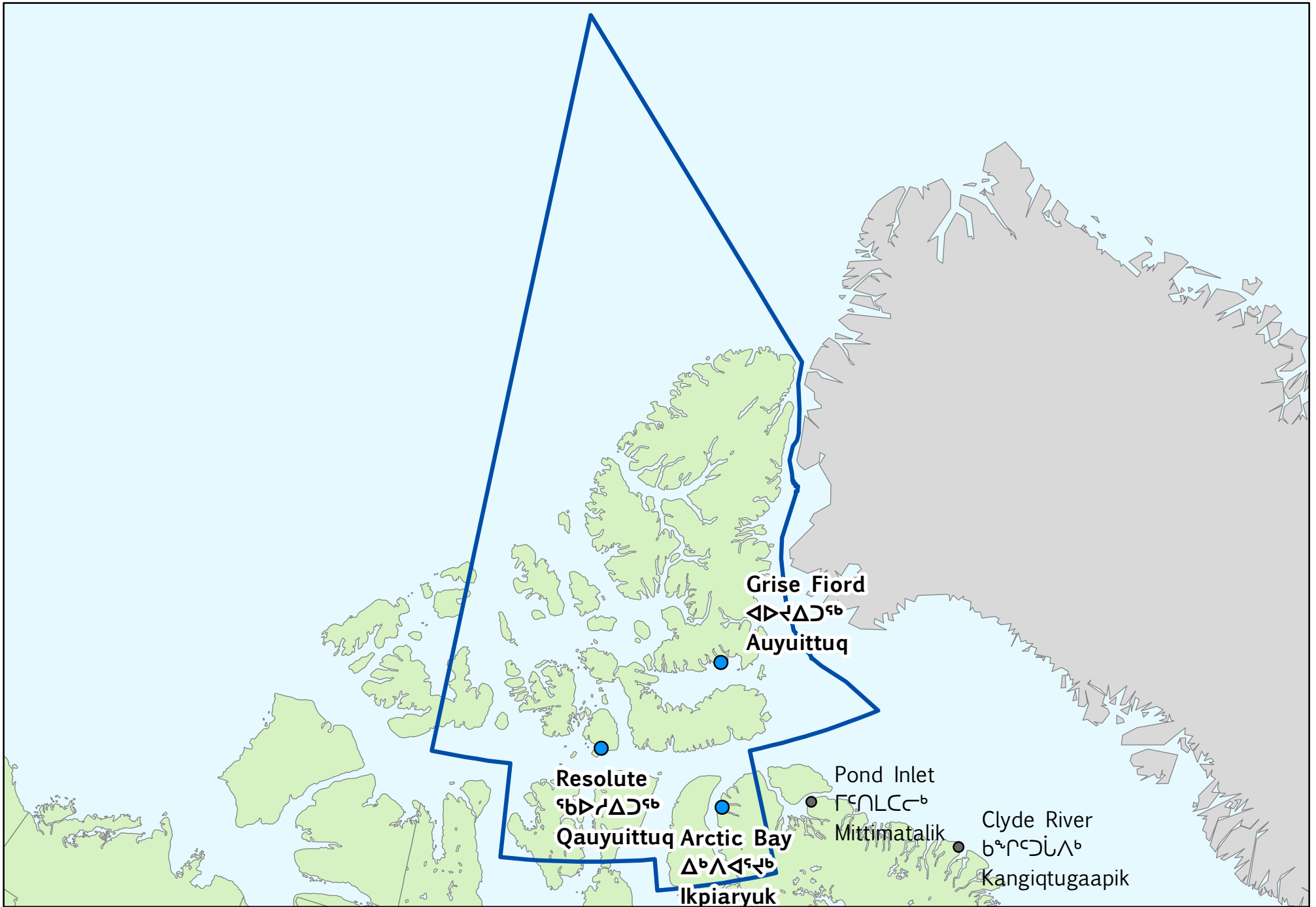
ᖃᖃᖃᖃᖃᖃ

NETSILIK - ᓄᓕᓂᓪᓴ

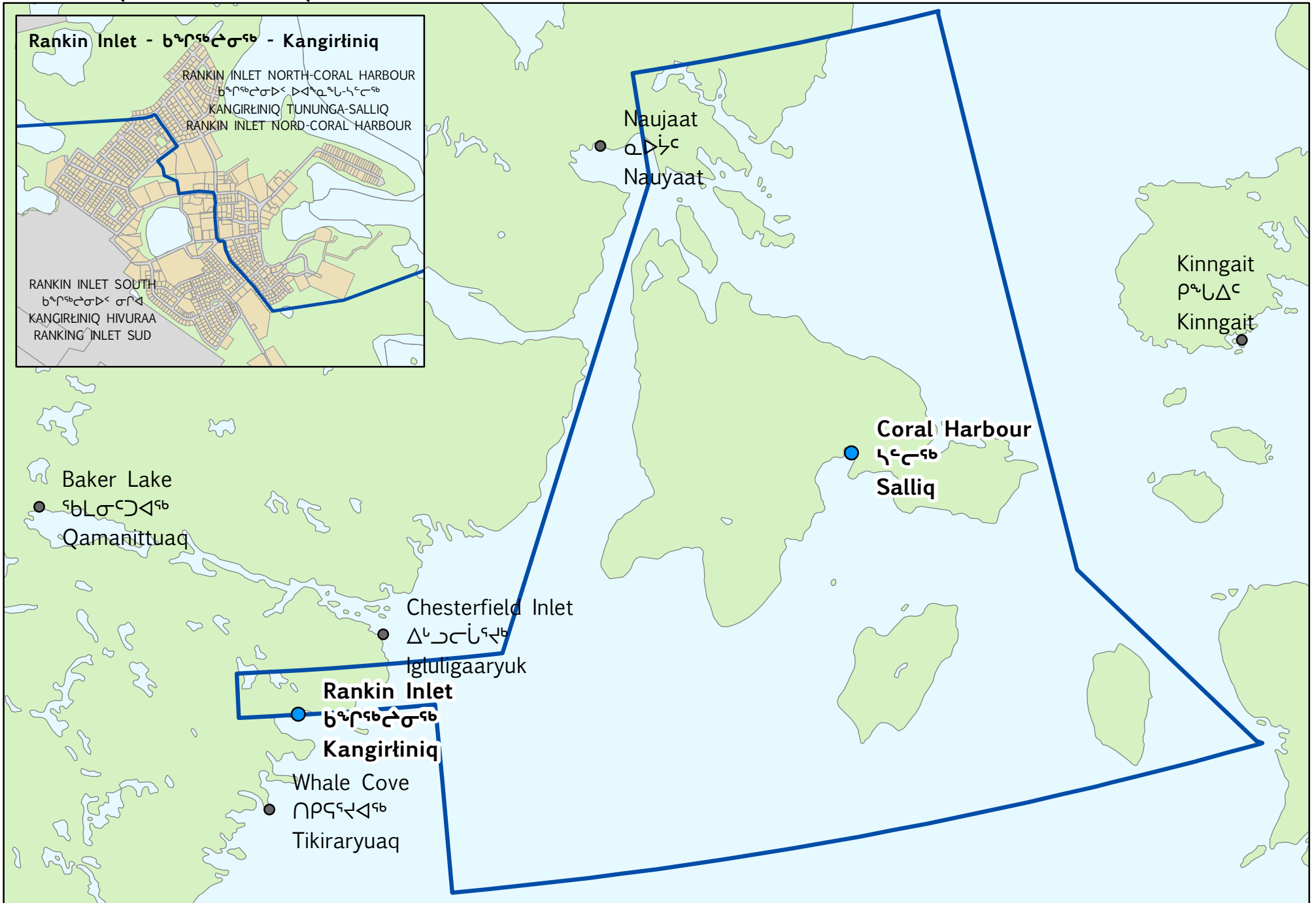


PANGNIRTUNG - ᐱᓄᓂᓂᐃᓄᓂᐃᐅᐃᓄᓂᐃᓄᓂᐃ - PANGNIQTUUQ

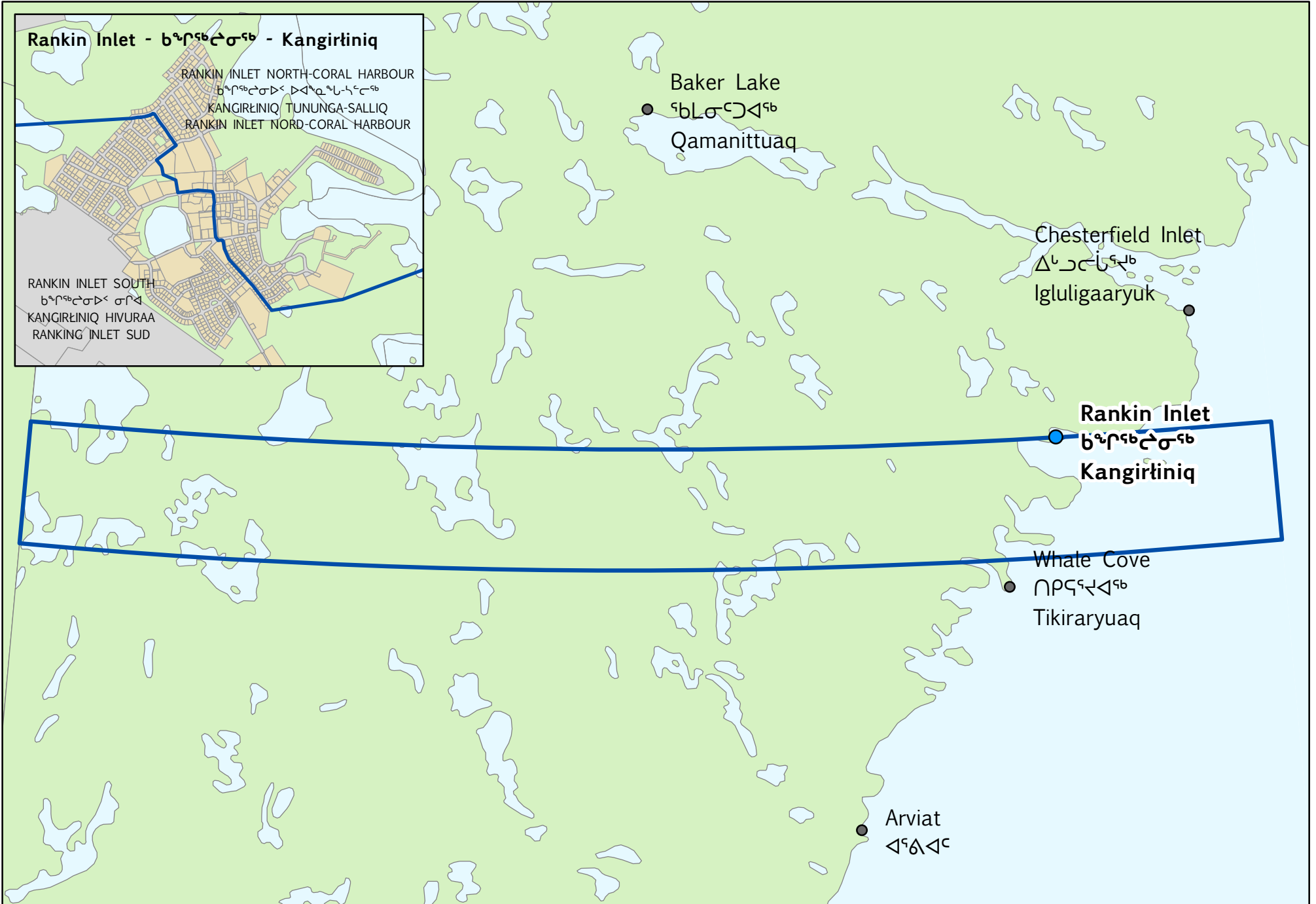




RANKIN INLET NORTH-CORAL HARBOUR - ᑲᓐᑦᑦᑲᑦᑲᑦᑲᑦ ᑲᑲᑦᑲᑦᑲᑦᑲᑦ
 KANGIRĪINIQ TUNUNGA-SALLIQ - RANKIN INLET NORD-CORAL HARBOUR

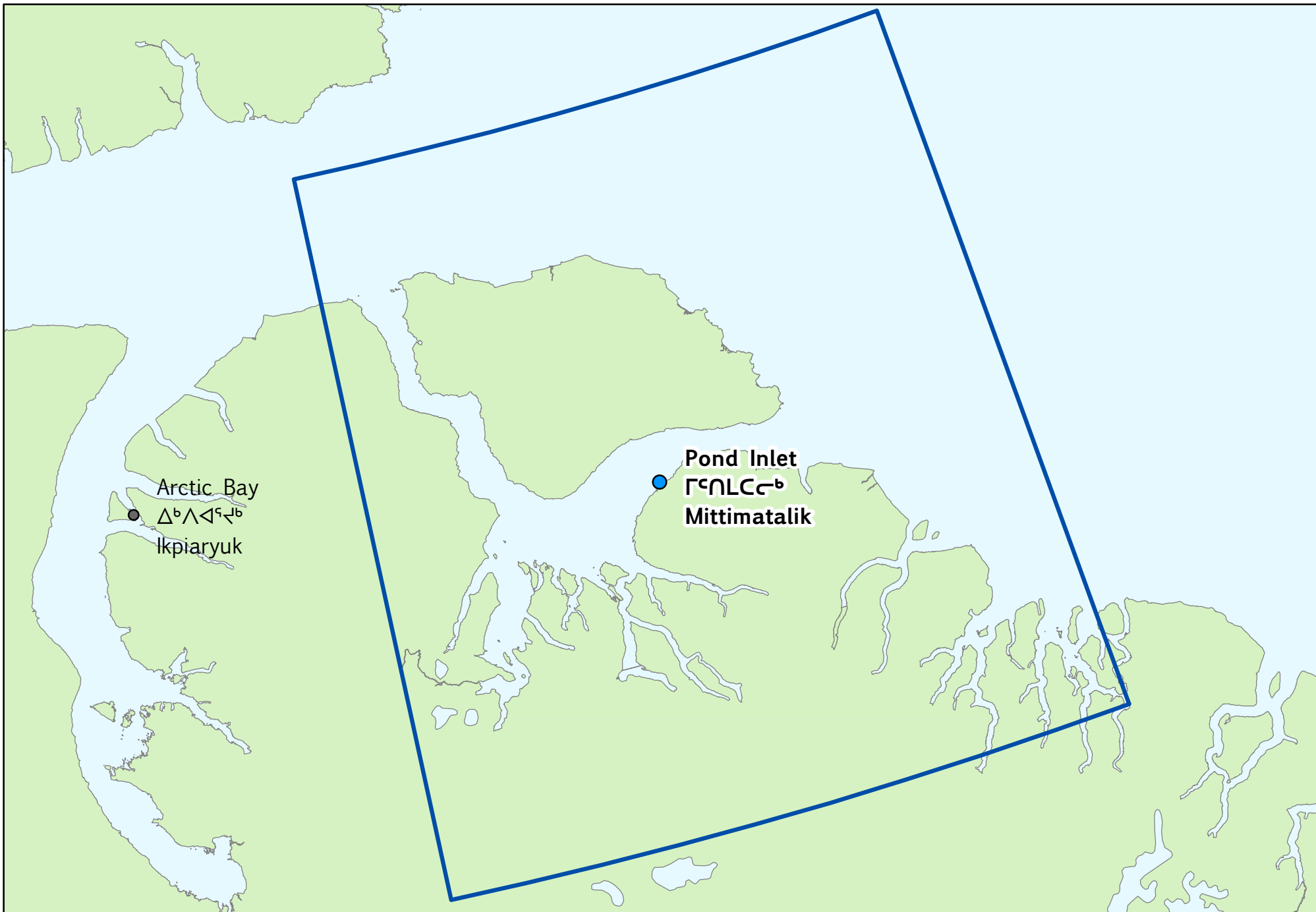


RANKIN INLET SOUTH - ᖃᖃᖃᖃᖃᖃ ᖃᖃᖃ - KANGIRĪINIĀ HIVURAA - RANKIN INLET SUD



SOUTH BAFFIN - ᑭᑭᑭᑭᑭ ᑭᑭᑭ - HIVURAA QIKIQTAAALUK - BAFFIN SUD





Arctic Bay

ᐃᐅᐅᐅᐅ

Ikpiaryuk

Pond Inlet

ᐅᐅᐅᐅᐅ

Mittimatalik

UQQUMMIUT - ᐅᑦᐃᑦᐅᑦ - UQQURMIUT

