

SECOND SESSION
SIXTH LEGISLATIVE ASSEMBLY
OF NUNAVUT

DEUXIÈME SESSION
SIXIÈME ASSEMBLÉE LÉGISLATIVE
DU NUNAVUT

HOUSE BILL

PROJET DE LOI DE L'ASSEMBLÉE
LÉGISLATIVE

BILL 35

PROJET DE LOI N° 35

AN ACT RESPECTING THE
CONSTITUENCIES OF NUNAVUT

LOI SUR LES CIRCONSCRIPTIONS DU
NUNAVUT

Summary

Résumé

This Bill amends the *Nunavut Elections Act* to implement the recommendations of the *Nunavut Electoral Boundaries Commission Report 2023*.

Le présent projet de loi modifie la *Loi électorale du Nunavut* et met en œuvre les recommandations qui figurent dans le *Rapport 2023* de la *Commission de délimitation des circonscriptions du Nunavut*.

Date of Notice Date de l'avis	1st Reading 1 ^{re} lecture	2nd Reading 2 ^e lecture	Reported from Standing Committee Présentation du rapport du comité permanent	Reported from Committee of the Whole Présentation du rapport du comité plénier	3rd Reading 3 ^e lecture	Date of Assent Date de sanction

ᐃᑭ ᑭᑲᐱᑦᑲ ᐃᑲᐱᑲ, C.M., O.Nu.
ᑲᑦᑲᑲᑲᑲ ᑲᑲᑲᑲ
Eva Qamaniq Aariak, C.M., O. Nu.
Commissioner of Nunavut
Commissaire du Nunavut

BILL 35

AN ACT RESPECTING THE CONSTITUENCIES OF NUNAVUT

The Commissioner, by and with the advice and consent of the Legislative Assembly, enacts as follows:

- 1. This Act amends the *Nunavut Elections Act*.**
- 2. Subsections 31(1) and (2) are repealed and replaced by:**

Constituencies

31. (1) Nunavut is divided into 22 constituencies with the names set out in Part 1 of the Schedule. Each language version of those names is equally authoritative.

Authoritative descriptions of constituencies

(2) The authoritative descriptions of the areas and boundaries of the constituencies are contained in the electronic copy entitled *Official Digital Version of Nunavut's Constituencies Maps 2023*, prepared by the Chief Electoral Officer in accordance with subsection 20(4) and the *Nunavut Electoral Boundaries Commission Report 2023* dated July 4, 2023.

- 3. The Schedule is repealed and replaced by the Schedule in the Schedule to this Act.**
- 4. This Act comes into force on the 1st day following the day the Sixth Legislative Assembly dissolves, but no earlier than six months after the day this Act receives Assent.**

SCHEDULE

(section 3)

SCHEDULE

(section 31)

**Part 1
Names of Constituencies**

English	ᐃᐅᑲᑎᑭ	Français	Inuinnaqtun
Aggu	ᐱᑲᑭ	Aggu	Aggu
Amittuq	ᐱᑎᑦᑭᐅᑲ	Amittuq	Amittuq
Arviat North-Whale Cove	ᐱᑦᑲᐱᑭ ᐅᐱᑦᐱᑲᑲᑲ-ᑎᑲᑲᑦᑲᐱᑲᑲ	Arviat Nord-Whale Cove	Arviat Tununga-Tikiraryuaq
Arviat South	ᐱᑦᑲᐱᑭ ᑭᑎᐱ	Arviat Sud	Arviat Hivuraa
Baker Lake	ᑲᐱᑲᑲ ᑭᑲᑲ	Baker Lake	Qamanittuaq
Cambridge Bay	ᐱᑲᑲᐅᑲᐅᑎᐱᑲᑲ	Cambridge Bay	Iqaluktuuttiaq
Chesterfield Inlet-Naujaat	ᐱᑲᑲᑲᑲᑲᑲᑲ-ᐱᑲᑲᑲᑲ	Chesterfield Inlet-Naujaat	Igluligaaryuk-Nauyaat
Gjoa Haven	ᑲᑲᑲᑲᑲᑲᑲᑲ	Gjoa Haven	Uqhuqtuuq
Hudson Bay	ᑲᑲᑲᑲᑲᑲᑲᑲ	Baie d’Hudson	Tahiuaryuaq
Iqaluit-Manirajak	ᐱᑲᑲᐅᐱᑲᑲ-ᑲᑲᑲᑲ	Iqaluit-Manirajak	Iqaluit-Manirajak
Iqaluit-Niaqunnguu	ᐱᑲᑲᐅᐱᑲᑲ-ᑭᑲᑲᑲᑲ	Iqaluit-Niaqunnguu	Iqaluit-Niaqunnguu
Iqaluit-Sinaa	ᐱᑲᑲᐅᐱᑲᑲᑲ	Iqaluit-Sinaa	Iqaluit-Sinaa
Iqaluit-Tasiluk	ᐱᑲᑲᐅᐱᑲᑲᑲ-ᑲᑲᑲᑲ	Iqaluit-Tasiluk	Iqaluit-Tasiluk
Kugluktuk	ᑲᑲᑲᑲᑲᑲᑲᑲᑲ	Kugluktuk	Kugluktuk
Netsilik	ᑲᑲᑲᑲᑲᑲ	Netsilik	Netsilik
Pangnirtung	ᑲᑲᑲᑲᑲᑲᑲᑲ	Pangnirtung	Pangniqtuuq
Quttiktuq	ᑲᑲᑲᑲᑲᑲᑲᑲᑲ	Quttiktuq	Quttiktuq
Rankin Inlet North-Coral Harbour	ᑲᑲᑲᑲᑲᑲᑲᑲᑲᑲ ᐅᐱᑲᑲᑲᑲᑲᑲ-ᑲᑲᑲᑲᑲ	Rankin Inlet Nord-Coral Harbour	Kangirliniq Tununga-Salliq
Rankin Inlet South	ᑲᑲᑲᑲᑲᑲᑲᑲᑲᑲᑲᑲ ᑭᑎᐱ	Rankin Inlet Sud	Kangirliniq Hivuraa
South Baffin	ᑲᑲᑲᑲᑲᑲᑲᑲᑲᑲ ᑭᑎᐱ	Baffin Sud	Hivuraa Qikiqtaaluk
Tununiq	ᑲᑲᑲᑲᑲᑲ	Tununiq	Tununiq
Uqqummiut	ᐅᑲᑲᑲᑲᑲᑲ	Uqqummiut	Uqqurmiut

Part 2
Maps For Convenience of Reference

Please refer to the end of this document where the Maps of Nunavut and of the 22 Constituencies have been appended together.

PROJET DE LOI N° 35

LOI SUR LES CIRCONSCRIPTIONS DU NUNAVUT

Sur l'avis et avec le consentement de l'Assemblée législative, la commissaire édicte :

- 1. La présente loi modifie la *Loi électorale du Nunavut*.**
- 2. Les paragraphes 31(1) et (2) sont abrogés et remplacés par les paragraphes suivants :**

Circonscriptions

31. (1) Le Nunavut est divisé en 22 circonscriptions dont les noms figurent à la Partie 1 de l'annexe. Ces noms ont également force de loi en chaque langue.

Description des circonscriptions ayant force de loi

(2) La description ayant force de loi des régions et limites des circonscriptions se retrouve sur la copie électronique intitulée *Version numérique officielle 2023 des cartes des circonscriptions du Nunavut*, préparé par le directeur général des élections conformément au paragraphe 20(4), et au *Rapport 2023* de la *Commission des délimitations électorales du Nunavut* daté du 4 juillet 2023.

- 3. L'annexe est abrogée et remplacée par l'annexe se trouvant à l'annexe de la présente loi.**
- 4. La présente loi entre en vigueur le jour suivant la dissolution de la sixième Assemblée législative, mais moins de six mois après la date de la sanction de la présente loi.**

ANNEXE

(article 3)

ANNEXE

(article 31)

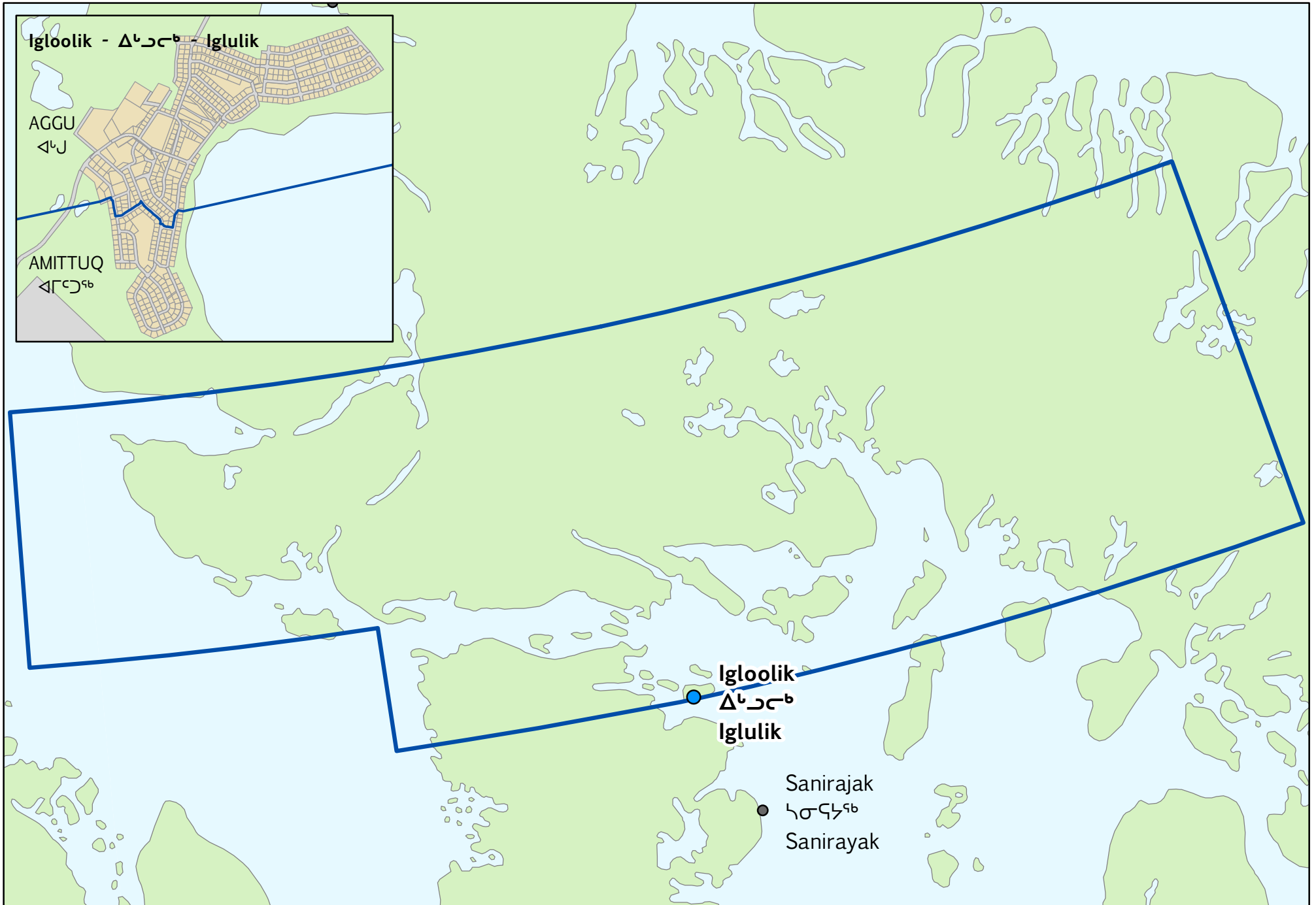
Partie 1
Noms des circonscriptions

English	ᐃᐅᑲᑎᓐᓂᑦ	Français	Inuinnaqtun
Aggu	ᐳᓴᓴ	Aggu	Aggu
Amittuq	ᐳᓴᑦᓂᑦᑲᑦ	Amittuq	Amittuq
Arviat North-Whale Cove	ᐳᓴᑦᓂᑦᓂᑦᐳᓴᑦᓂᑦ ᐳᓴᑦᓂᑦᓂᑦᐳᓴᑦᓂᑦ	Arviat Nord-Whale Cove	Arviat Tununga-Tikiraryuaq
Arviat South	ᐳᓴᑦᓂᑦᓂᑦᐳᓴᑦᓂᑦ	Arviat Sud	Arviat Hivuraa
Baker Lake	ᓴᓴᓂᓂᑦᓂᑦᐳᓴᑦᓂᑦ	Baker Lake	Qamanittuaq
Cambridge Bay	ᐳᓴᓂᓂᑦᓂᑦᐳᓴᑦᓂᑦ	Cambridge Bay	Iqaluktuuttiaq
Chesterfield Inlet-Naujaat	ᐳᓴᓂᓂᑦᓂᑦᐳᓴᑦᓂᑦ ᐳᓴᓂᓂᑦᓂᑦᐳᓴᑦᓂᑦ	Chesterfield Inlet-Naujaat	Igluligaaryuk-Nauyaat
Gjoa Haven	ᐳᓴᓂᓂᑦᓂᑦᐳᓴᑦᓂᑦ	Gjoa Haven	Uqhuqtuuq
Hudson Bay	ᐳᓴᓂᓂᑦᓂᑦᐳᓴᑦᓂᑦ	Baie d'Hudson	Tahiuaryuaq
Iqaluit-Manirajak	ᐳᓴᓂᓂᑦᓂᑦᐳᓴᑦᓂᑦ	Iqaluit-Manirajak	Iqaluit-Manirajak
Iqaluit-Niaqunnguu	ᐳᓴᓂᓂᑦᓂᑦᐳᓴᑦᓂᑦ	Iqaluit-Niaqunnguu	Iqaluit-Niaqunnguu
Iqaluit-Sinaa	ᐳᓴᓂᓂᑦᓂᑦᐳᓴᑦᓂᑦ	Iqaluit-Sinaa	Iqaluit-Sinaa
Iqaluit-Tasiluk	ᐳᓴᓂᓂᑦᓂᑦᐳᓴᑦᓂᑦ	Iqaluit-Tasiluk	Iqaluit-Tasiluk
Kugluktuk	ᓴᓴᓂᓂᑦᓂᑦᐳᓴᑦᓂᑦ	Kugluktuk	Kugluktuk
Netsilik	ᓴᓴᓂᓂᑦᓂᑦᐳᓴᑦᓂᑦ	Netsilik	Netsilik
Pangnirtung	ᐳᓴᓂᓂᑦᓂᑦᐳᓴᑦᓂᑦ	Pangnirtung	Pangniqtuuq
Quttiktuq	ᓴᓴᓂᓂᑦᓂᑦᐳᓴᑦᓂᑦ	Quttiktuq	Quttiktuq
Rankin Inlet North-Coral Harbour	ᓴᓴᓂᓂᑦᓂᑦᐳᓴᑦᓂᑦ ᐳᓴᓂᓂᑦᓂᑦᐳᓴᑦᓂᑦ	Rankin Inlet Nord-Coral Harbour	Kangirliniq Tununga-Salliq
Rankin Inlet South	ᓴᓴᓂᓂᑦᓂᑦᐳᓴᑦᓂᑦ	Rankin Inlet Sud	Kangirliniq Hivuraa
South Baffin	ᓴᓴᓂᓂᑦᓂᑦᐳᓴᑦᓂᑦ	Baffin Sud	Hivuraa Qikiqtaaluk
Tununiq	ᐳᓴᓂᓂᑦᓂᑦᐳᓴᑦᓂᑦ	Tununiq	Tununiq
Uqqummiut	ᐳᓴᓂᓂᑦᓂᑦᐳᓴᑦᓂᑦ	Uqqummiut	Uqqurmiut

Partie 2
Cartes reproduites pour en faciliter la consultation

Prière de se reporter à la fin du présent document où sont regroupées les cartes du Nunavut et des 22 circonscriptions.

AGGU - ᐱᑭᑦ



Iglulik - ᐱᑭᑦ - Iglulik

AGGU
ᐱᑭᑦ

AMITTUQ
ᐱᑭᑦᐱᑦ

Iglulik
ᐱᑭᑦ
Iglulik

Sanirajak
ᐱᑭᑦᐱᑦ
Sanirayak

AMITTUQ - ᐱᐢᐸᐸᐸᐸ



Igloolik - ᐱᐸᐸᐸᐸ - Iglulik

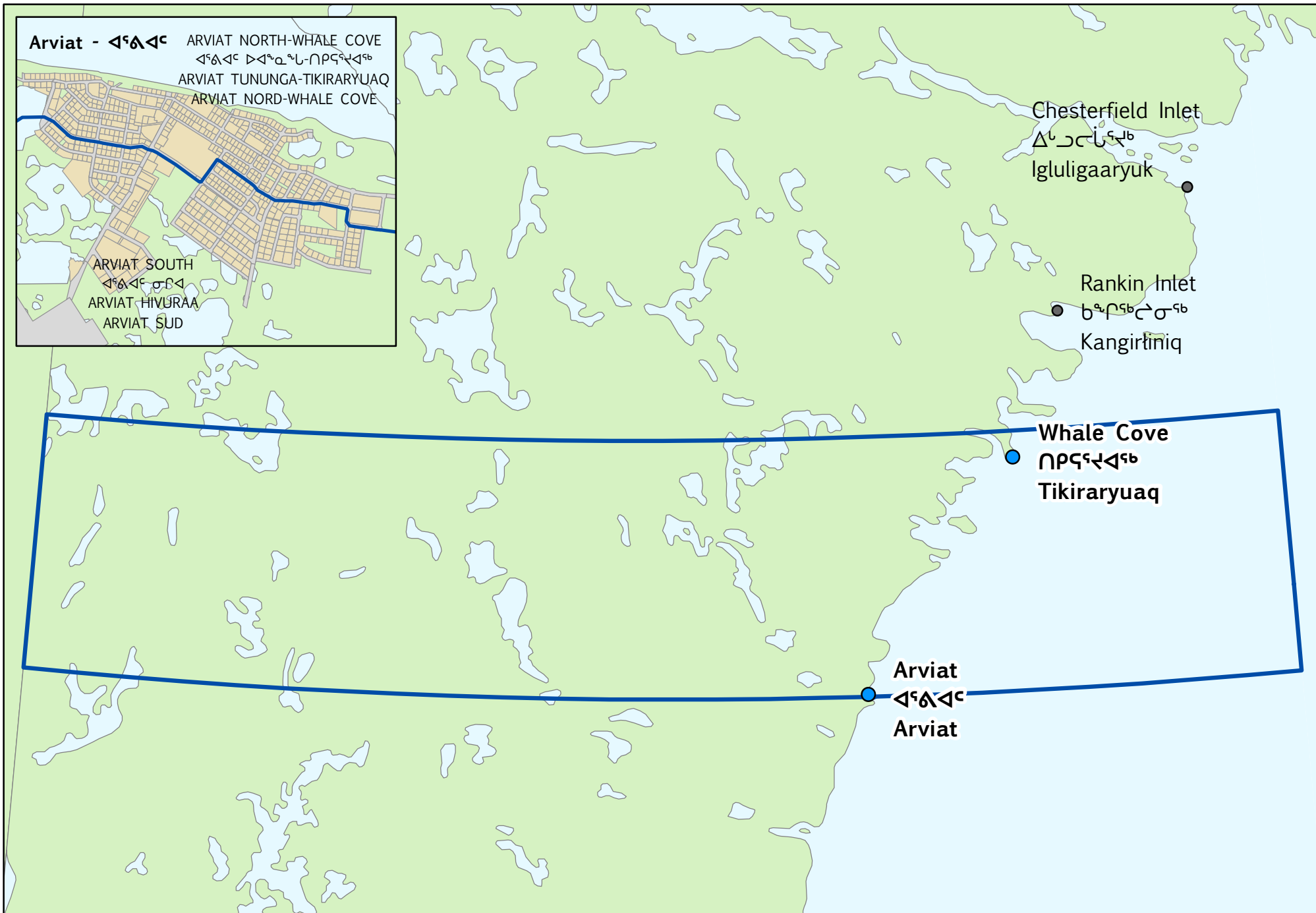
AGGU
ᐱᐸᐸ

AMITTUQ
ᐱᐢᐸᐸᐸᐸ

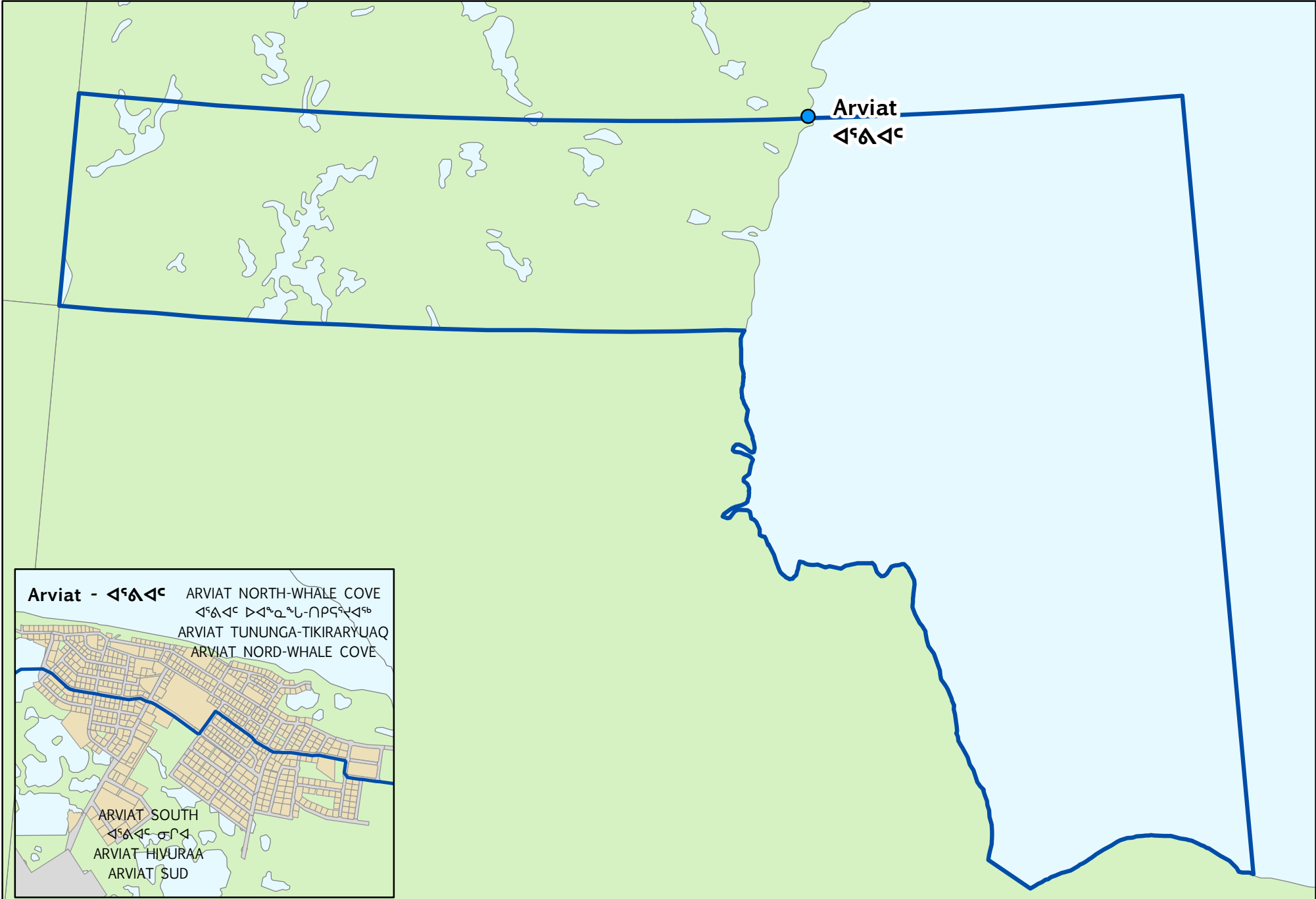
Igloolik
ᐱᐸᐸᐸᐸ
Iglulik

Sanirajak
ᐸᐸᐸᐸᐸᐸ
Sanirajak

ARVIAT NORTH-WHALE COVE - ᐱᕐᖅᐱᕐᐱ ᐅᐱᕐᑍ ᕐᓂ-ᑎᕈᑕᕐᐱᕐᐱᕐᑍ - ARVIAT TUNUNGA-TIKIRARYUAQ - ARVIAT NORD-WHALE COVE



ARVIAT SOUTH - ᐱᖃᐱᐭᐭᐭ - ARVIAT HIVURAA - ARVIAT SUD



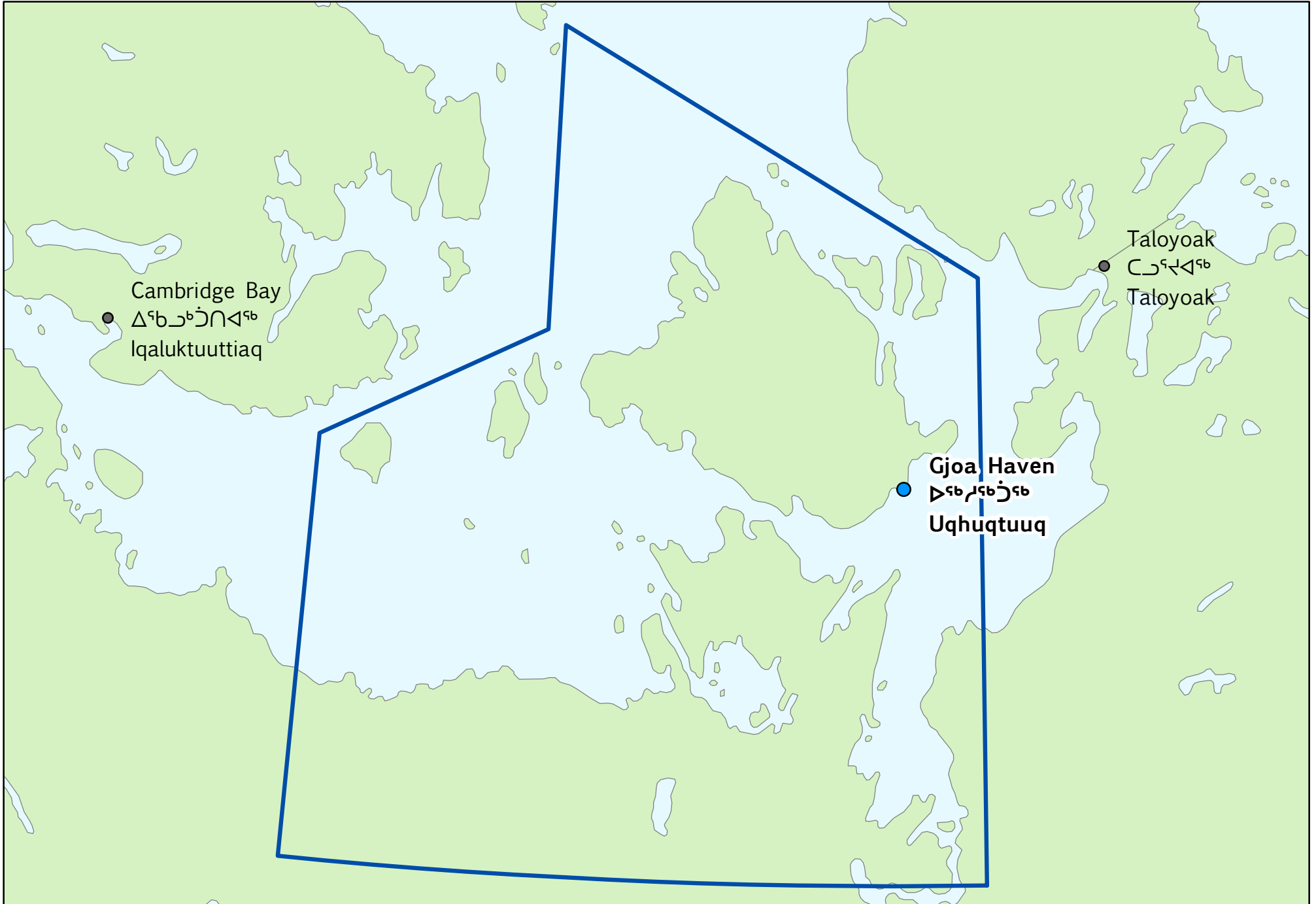
CAMBRIDGE BAY - ᐃᖃᓗᓐᓕᓕᓐᓗᓐ - IQALUKTUUTTIAQ



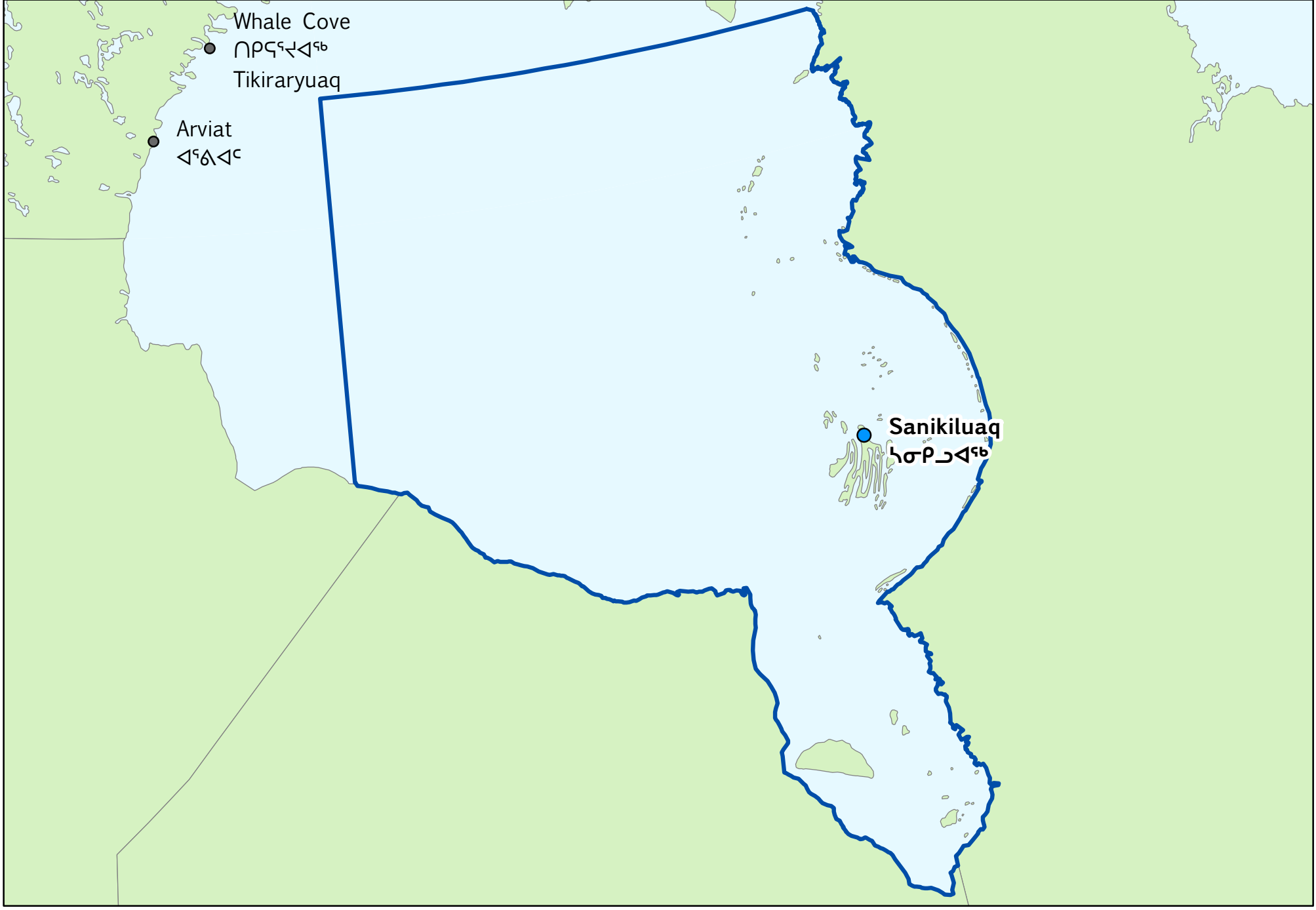
CHESTERFIELD INLET-NAUJAAT - ᐃᓈᐃᐱᓇᐱᓄᓐ-ᐱᓄᓄᐱᐱᓄ - ᐱᓄᓄᐱᐱᓄ-ᐱᓄᓄᐱᐱᓄ



GJOA HAVEN - ᐅᓃᓃᓃᓃᓃᓃ - UQHUQTUUQ



HUDSON BAY - ᑕᓯᐅᓴᓴᓴᓴᓴᓴᓴᓴ - TAHUYARYUAQ - BAIE D'HUDSON



Whale Cove

ᑎᓯᓴᓴᓴᓴᓴᓴᓴ

Tikiraryuaq

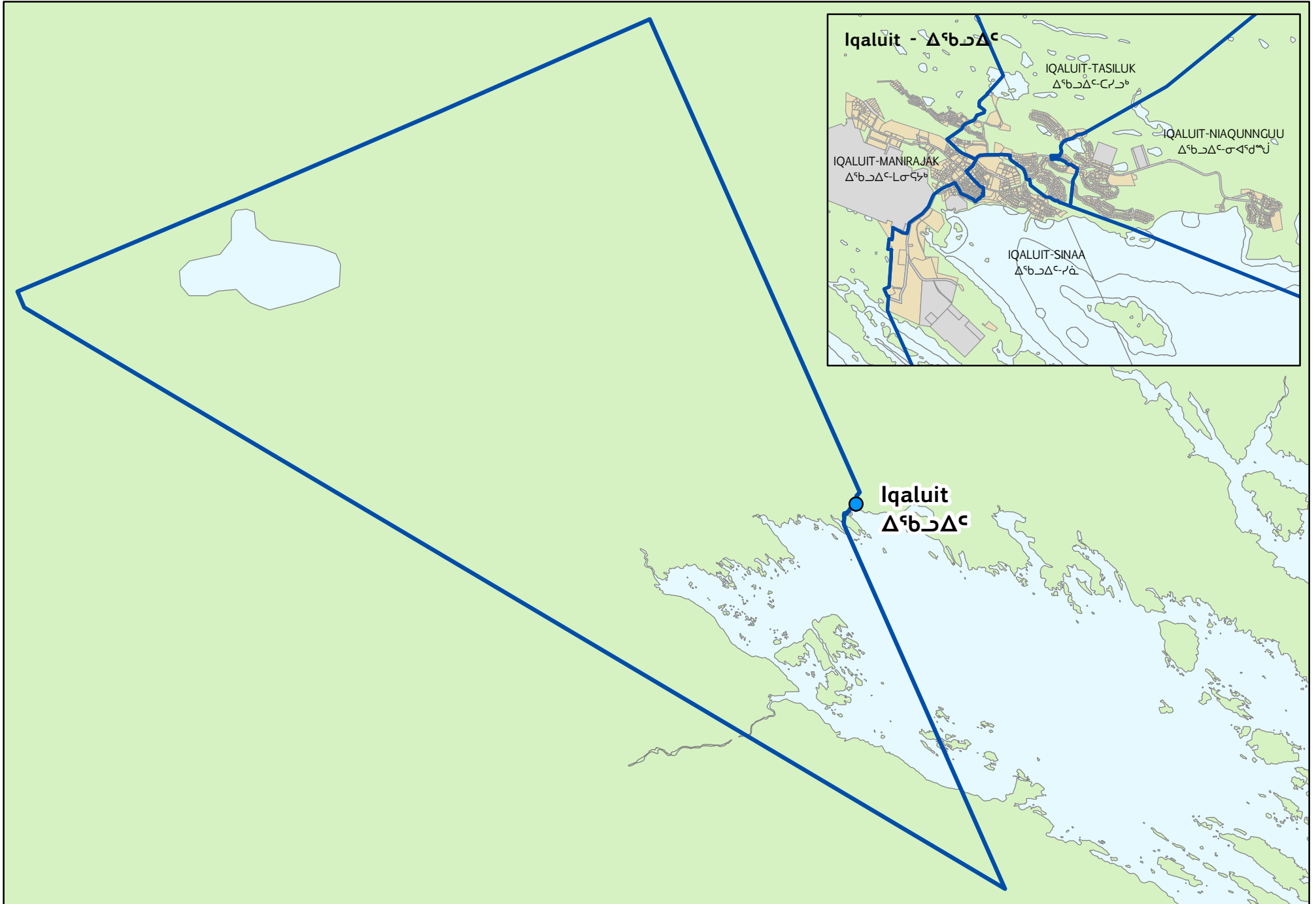
Arviat

ᓴᓴᓴᓴᓴᓴ

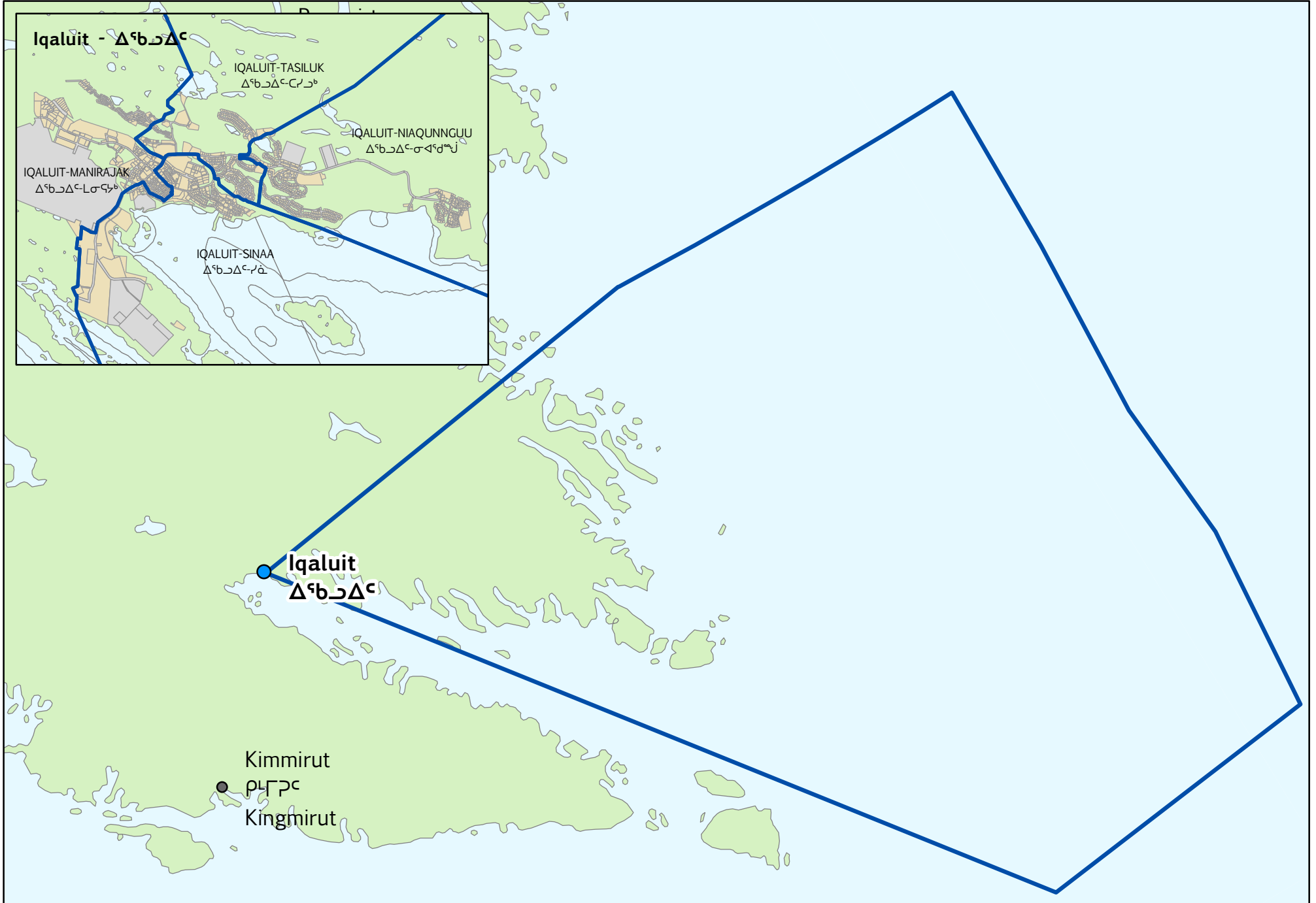
Sanikiluaq

ᓴᓴᓯᓴᓴᓴᓴᓴᓴ

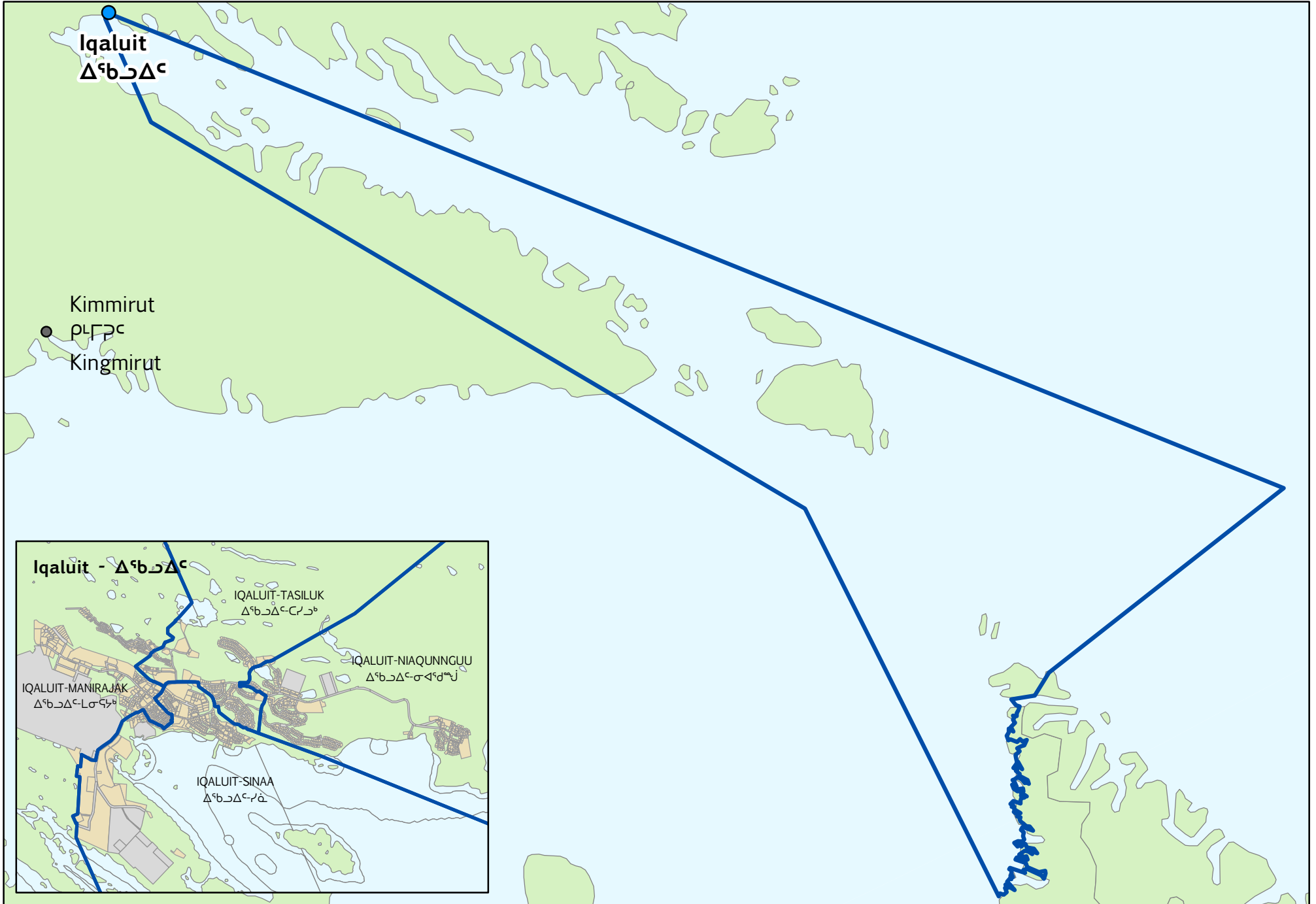
IQUALUIT-MANIRAJAK - ᐃᑦᑲᐃᑦ-ᐱᓂᑦᑲᐅ



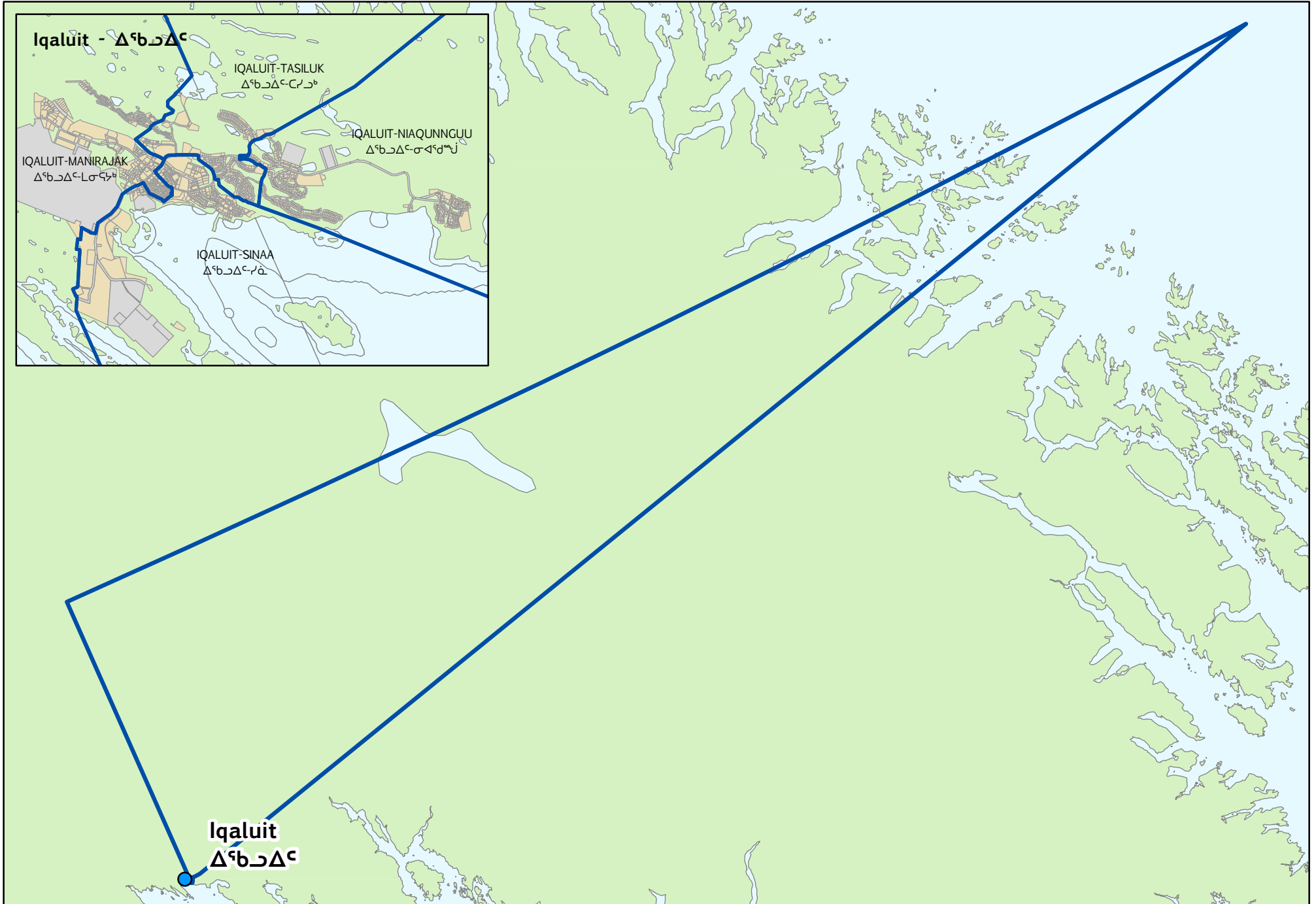
IQALUIT-NIAQUNGUU - ᐃᓐᑲᐱᐱᓐ - ᓂᐱᓐᑲᓐ



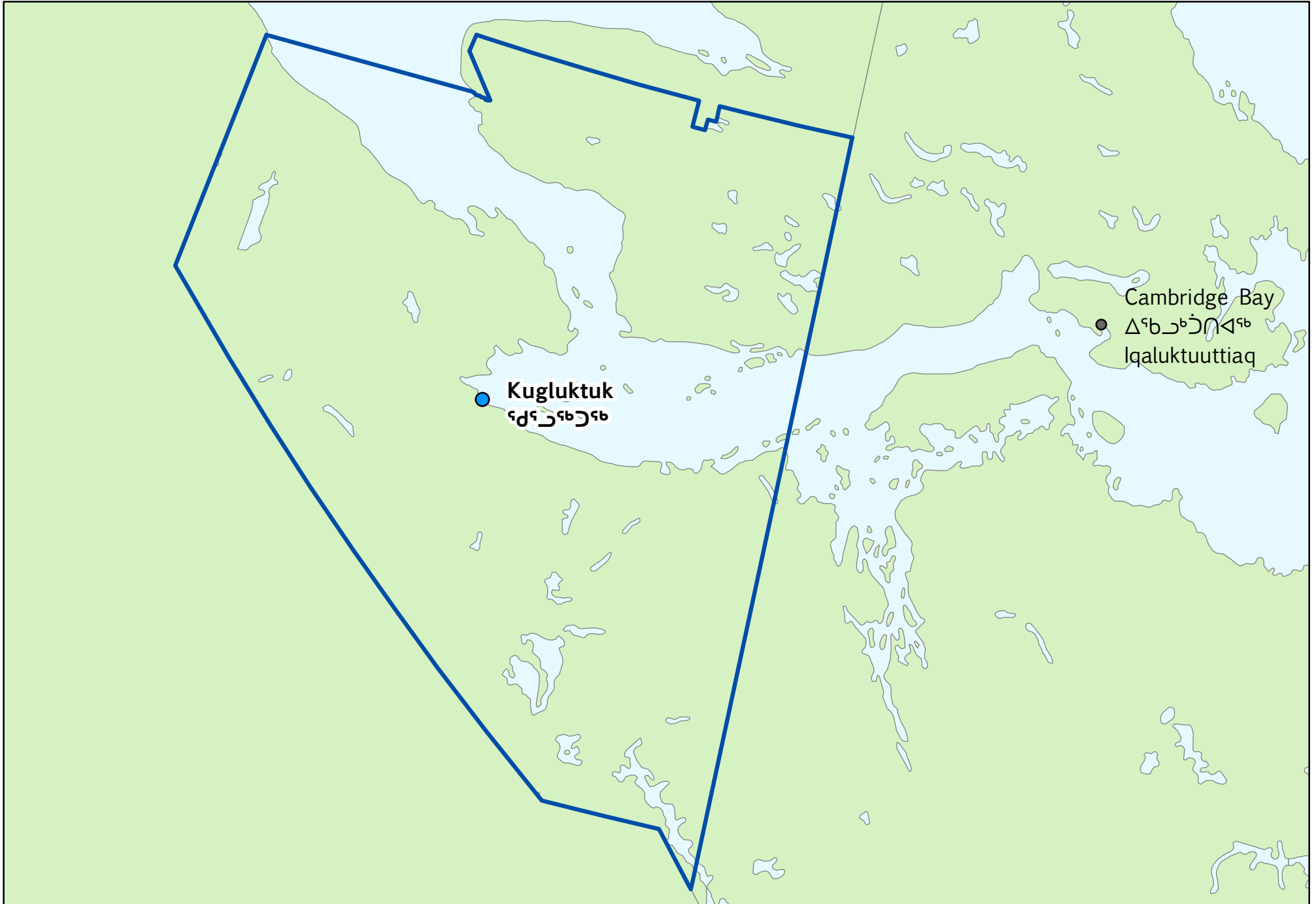
IQALUIT-SINAA - ᐃᑦᑲᐃᑦ-ᓱᐃ



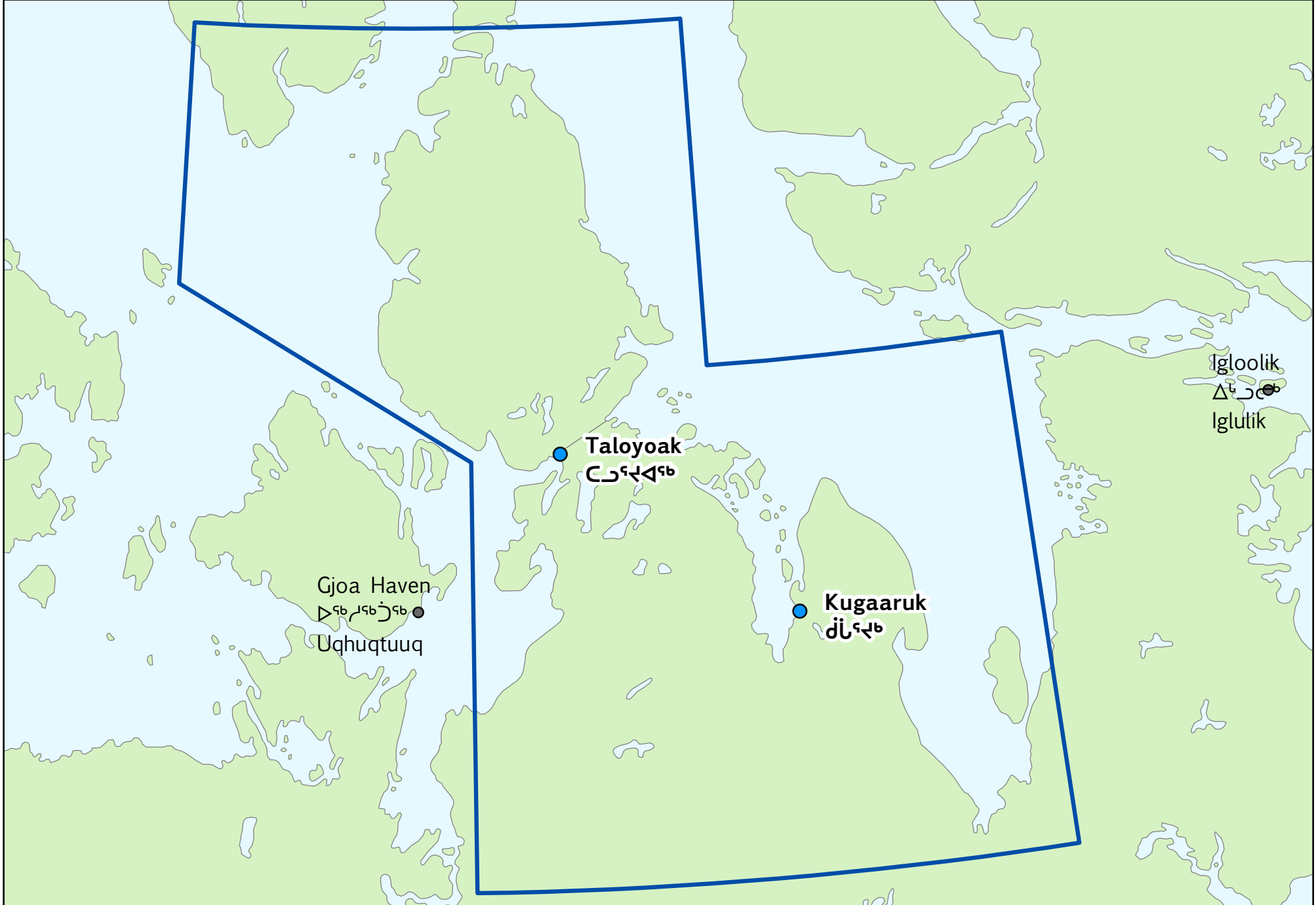
IQALUIT-TASILUK - ᐃᑦᑲᐃᑦ-ᑕᑦᑲᑦ



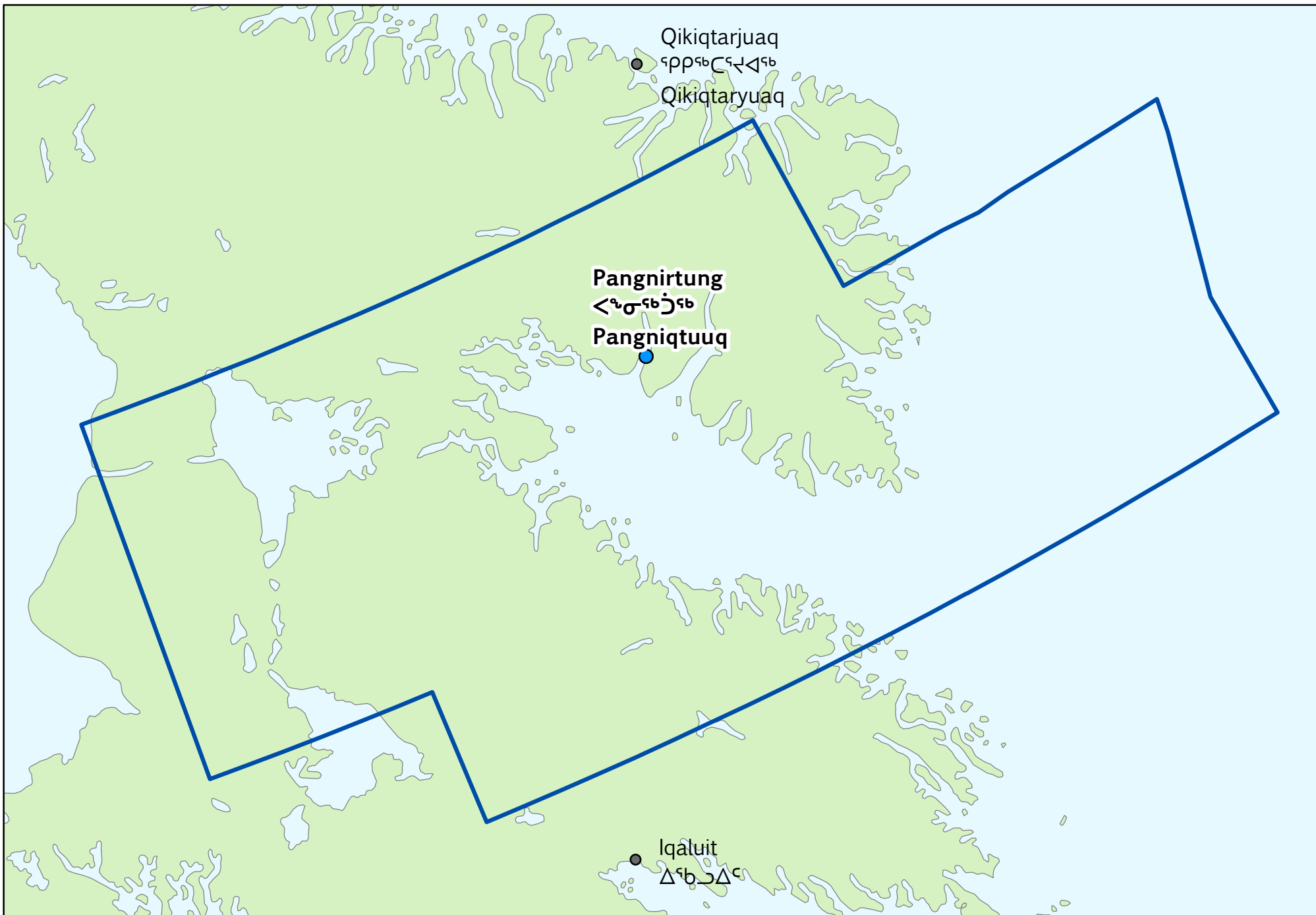
KUGLUKTUK - ᓄᓄᓕᓕᓐᓂᓐ



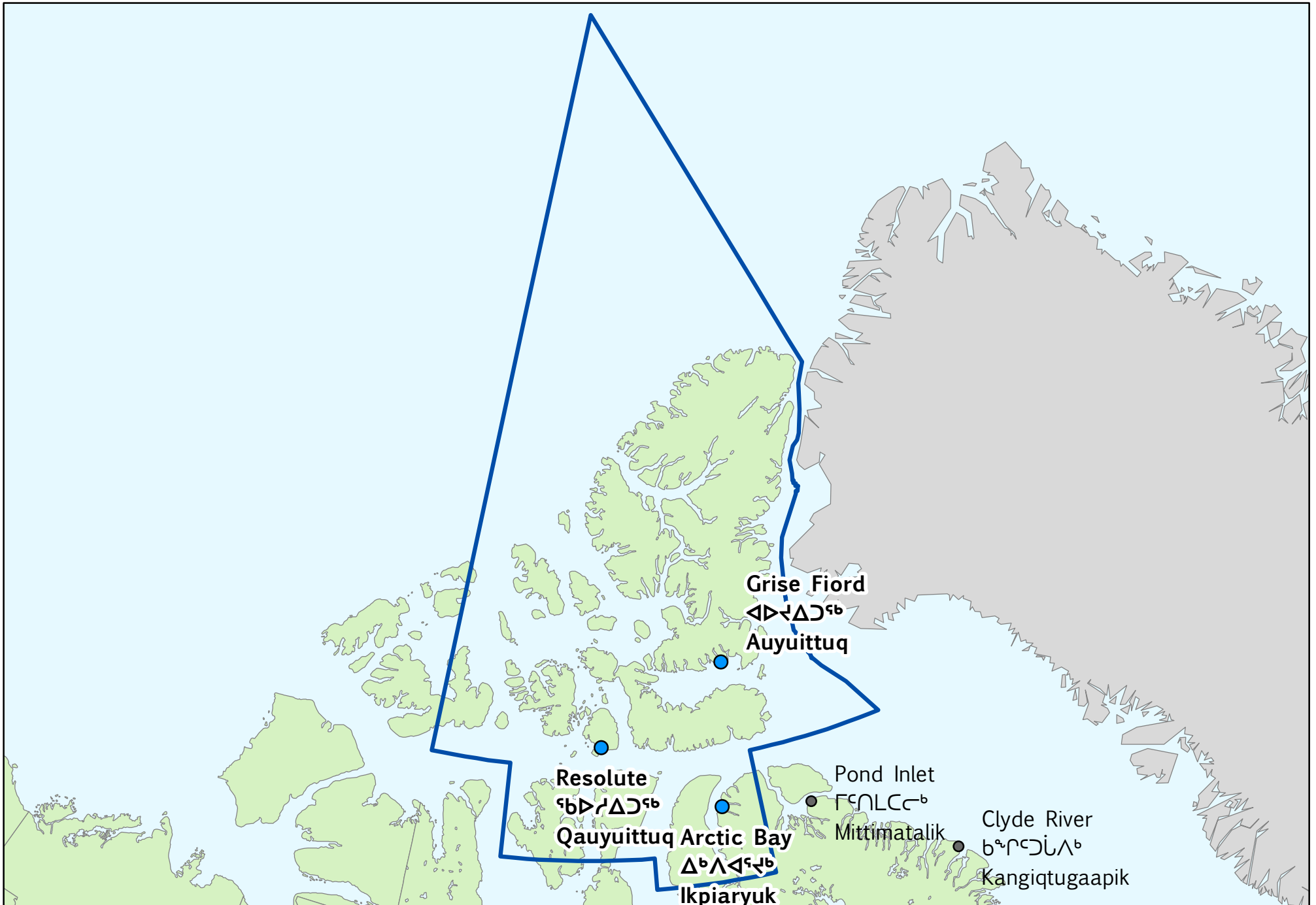
NETSILIK - ᓄᓕᓂᓪ



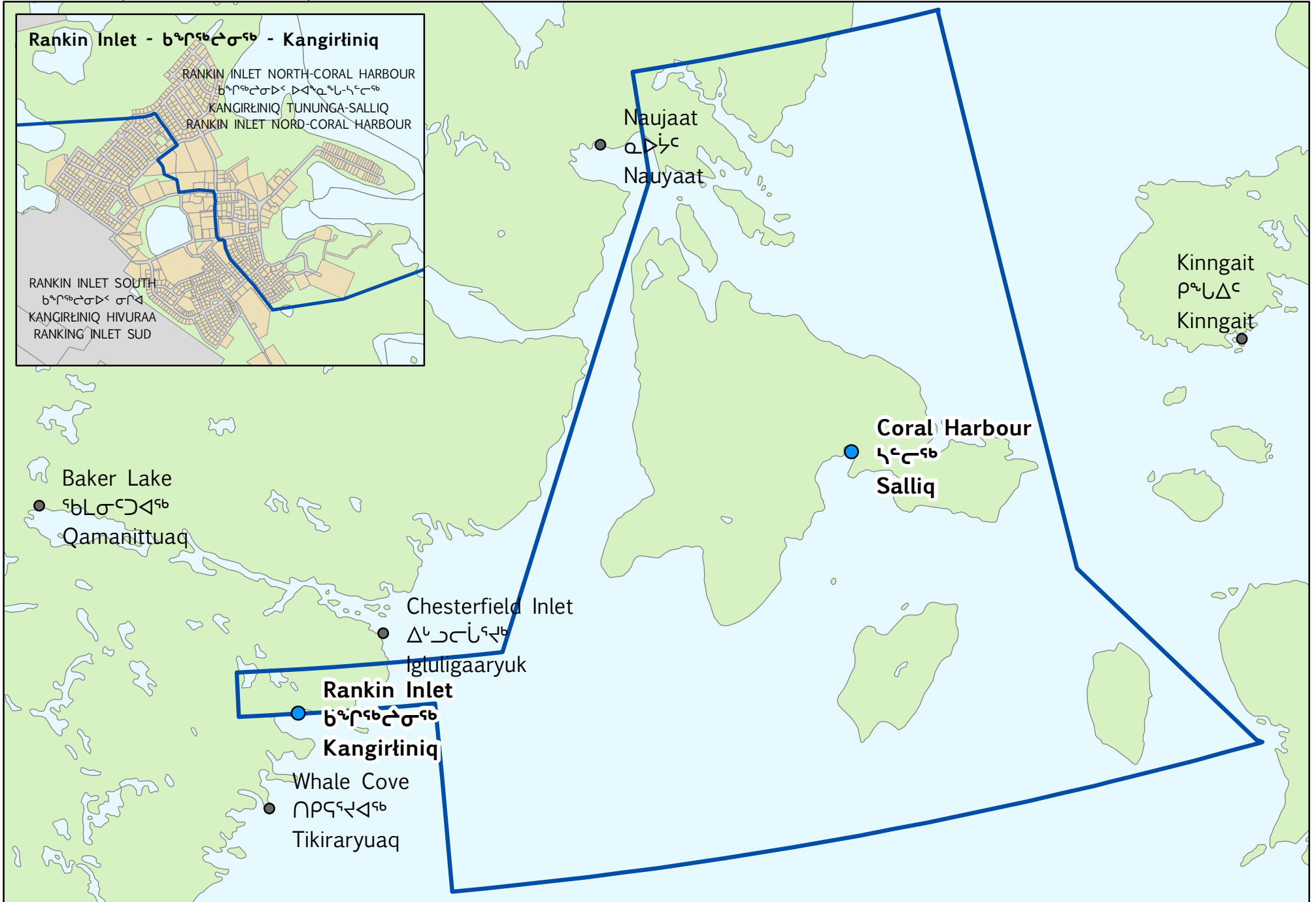
PANGNIRTUNG - ᐱᓄᓂᓂᓂᓂᓂᓂ - PANGNIQTUUQ



QUTTIKTUQ - ᑭᑭᑭᑭᑭᑭ

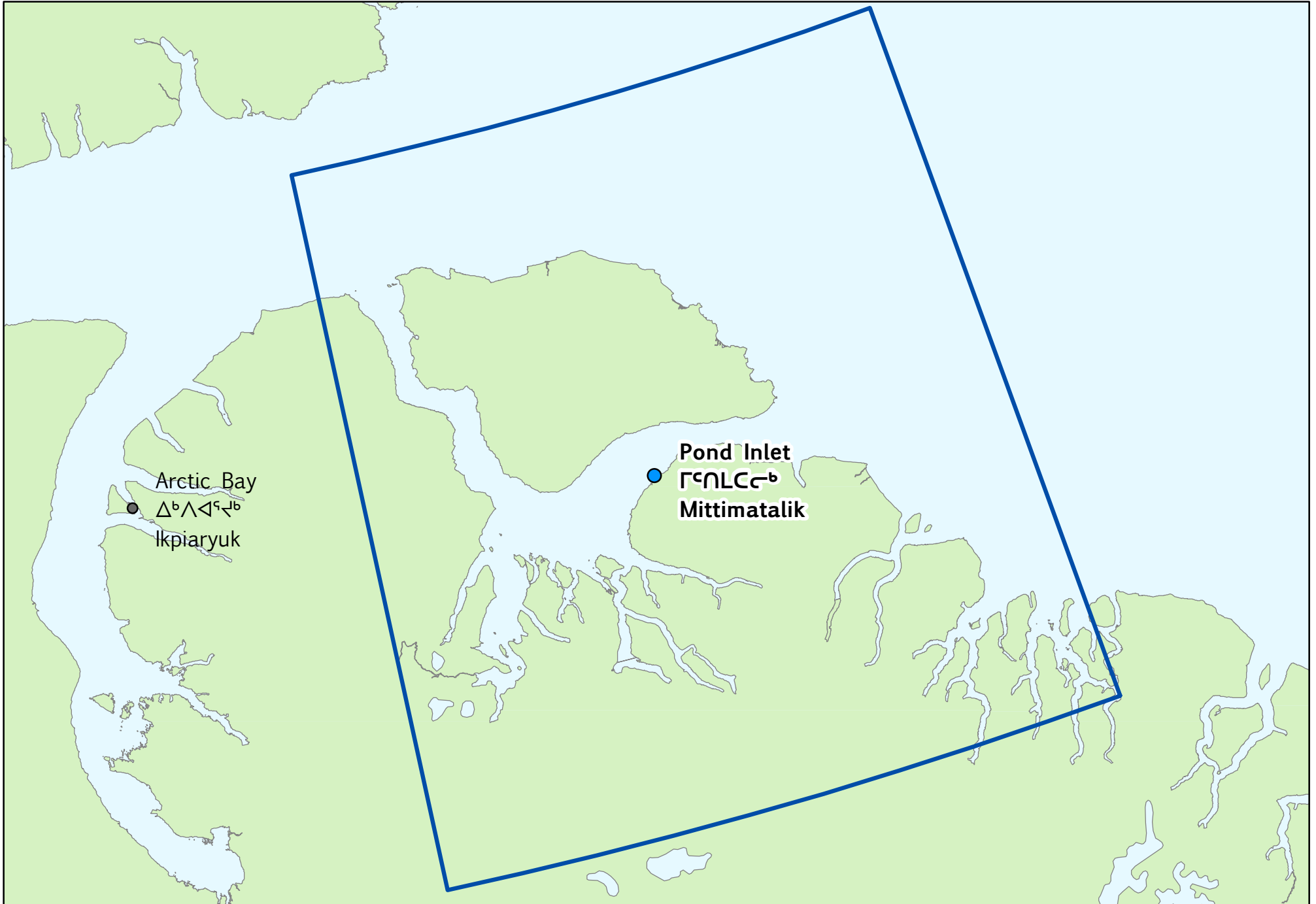


RANKIN INLET NORTH-CORAL HARBOUR - ᑲᓐᑦᑦᑲᑦᑲᑦ ᑲᑦᑲᑦᑲᑦ ᑲᑦᑲᑦᑲᑦ
KANGIRĚINIQ TUNUNGA-SALLIQ - RANKIN INLET NORD-CORAL HARBOUR



SOUTH BAFFIN - ᐱᐱᐱᐱᐱᐱ ᐱᐱᐱᐱᐱᐱ - HIVURAA QIKIQTAAALUK - BAFFIN SUD





UQQUMMIUT - ᐅᑦᐃᑦᐅᑦ - UQQURMIUT

